

Denver Parks & Recreation



Proposed Park Designations 2013

Park System History

- ❑ Park System had its origin in 1858 with the cities of Auraria, Denver City and Highland at the confluence of the South Platte River and Cherry Creek
- ❑ First park was Curtis Park in 1868
- ❑ First Park Board was created in 1893
- ❑ The Park Board directed the management and development of the park system until about 1904
- ❑ Under Mayor Speer, a charter amendment in 1904 was adopted that created the Department of "Improvements and Parks"
- ❑ In 1910 the Mountain Park System was established
- ❑ In 1956 the Department of Parks and Recreation was created.
- ❑ Parcels that were acquired, developed or treated as a park at this time (1956) became designated under this charter amendment
- ❑ Subsequent park designations are accomplished through the City Council ordinance process

Park Designation Considerations

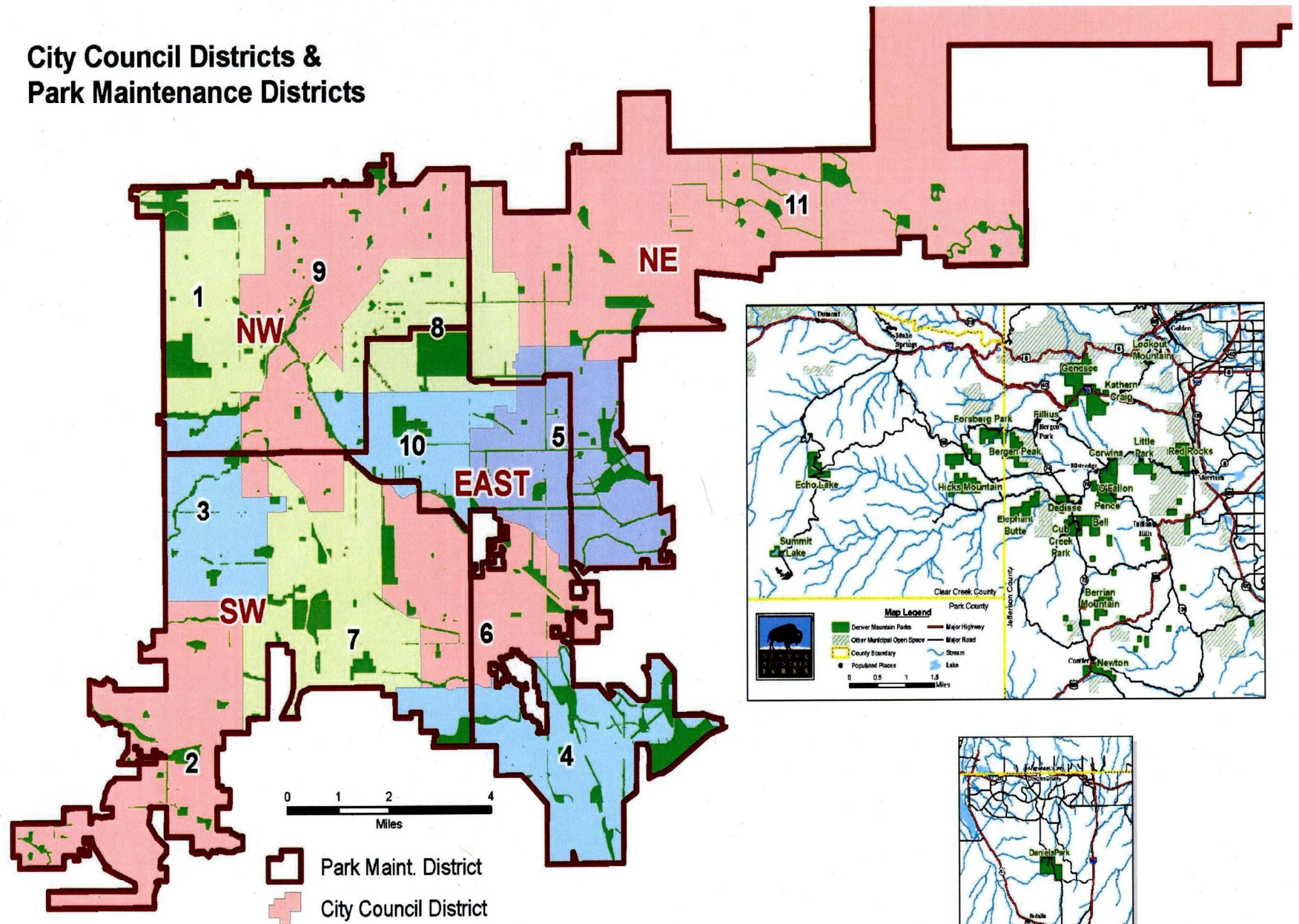
- ❑ Supports a master plan (City Park)
- ❑ Has historical, cultural, ecological, or educational significance (Civic Center, Cheesman)
- ❑ Preservation of key visual corridors or scenic vistas (Cramner)
- ❑ Supports the needs and desires of the affected community
- ❑ Park facilities have been or are planned to be constructed
- ❑ Area infrastructure / utilities are not in a state of flux that may impact or change the park
- ❑ There are no title / ownership issues that cast a cloud on the City's title or right to possession of the park
- ❑ No pending or anticipated plans for making/expanding non-park uses within the park.

Citywide Park Acres in January 2013

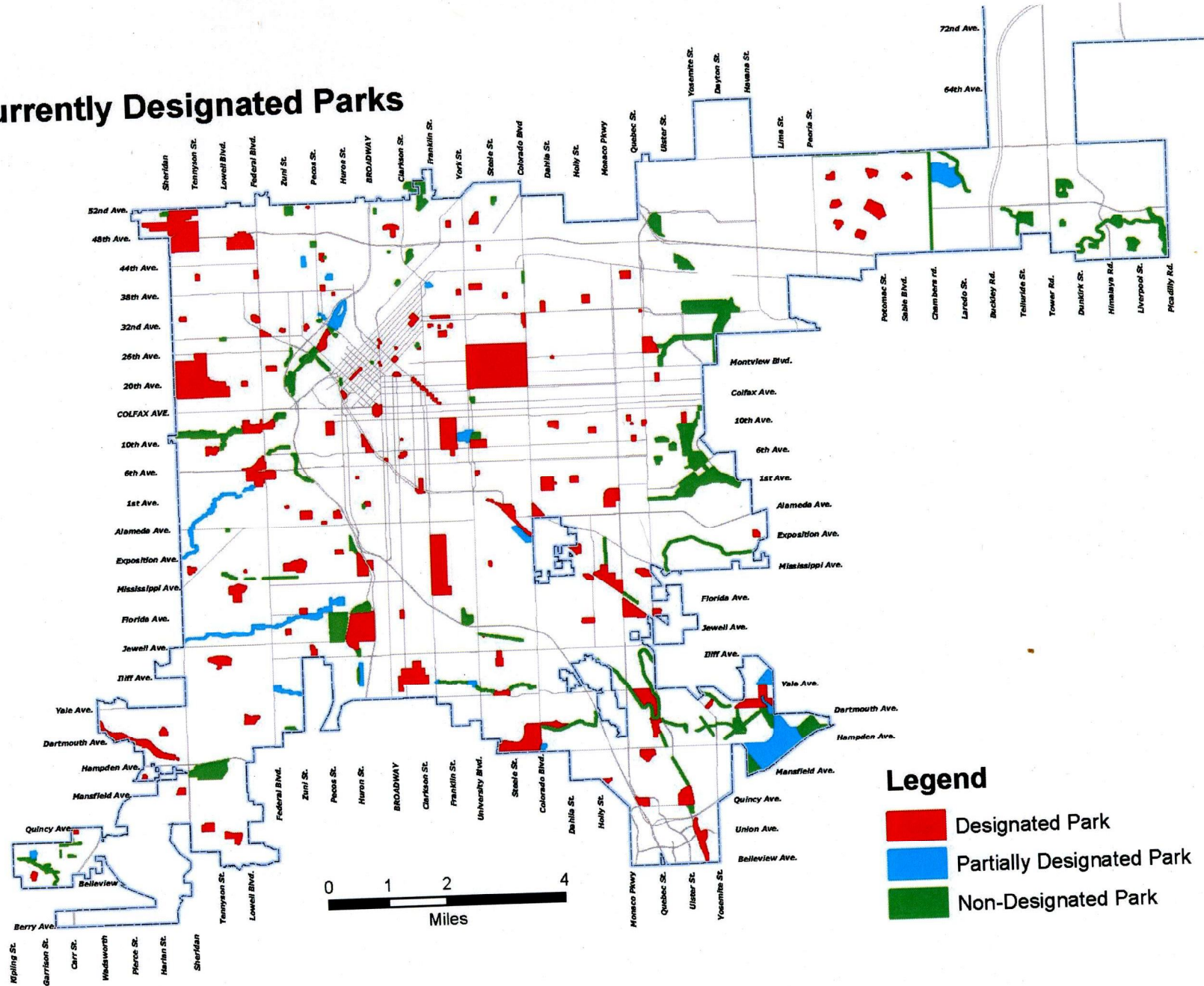
Council District	Acres*	2010 Population	Acres per 1000 Residents
1	681	45,723	15
2	346	54,682	6
3	221	50,157	4
4	964	52,998	18
5	515	56,648	9
6	488	49,907	10
7	589	52,341	11
8	550	54,163	10
9	429	51,288	8
10	230	49,013	5
11	876	83,238	11
Citywide	5,889	600,158	10
Mountain Parks	14,200	600,158	24
DPR System	20,089	600,158	33

* Includes all classifications: Park, Golf, Open Space, Trails, Parkways, Medians, and Natural Areas

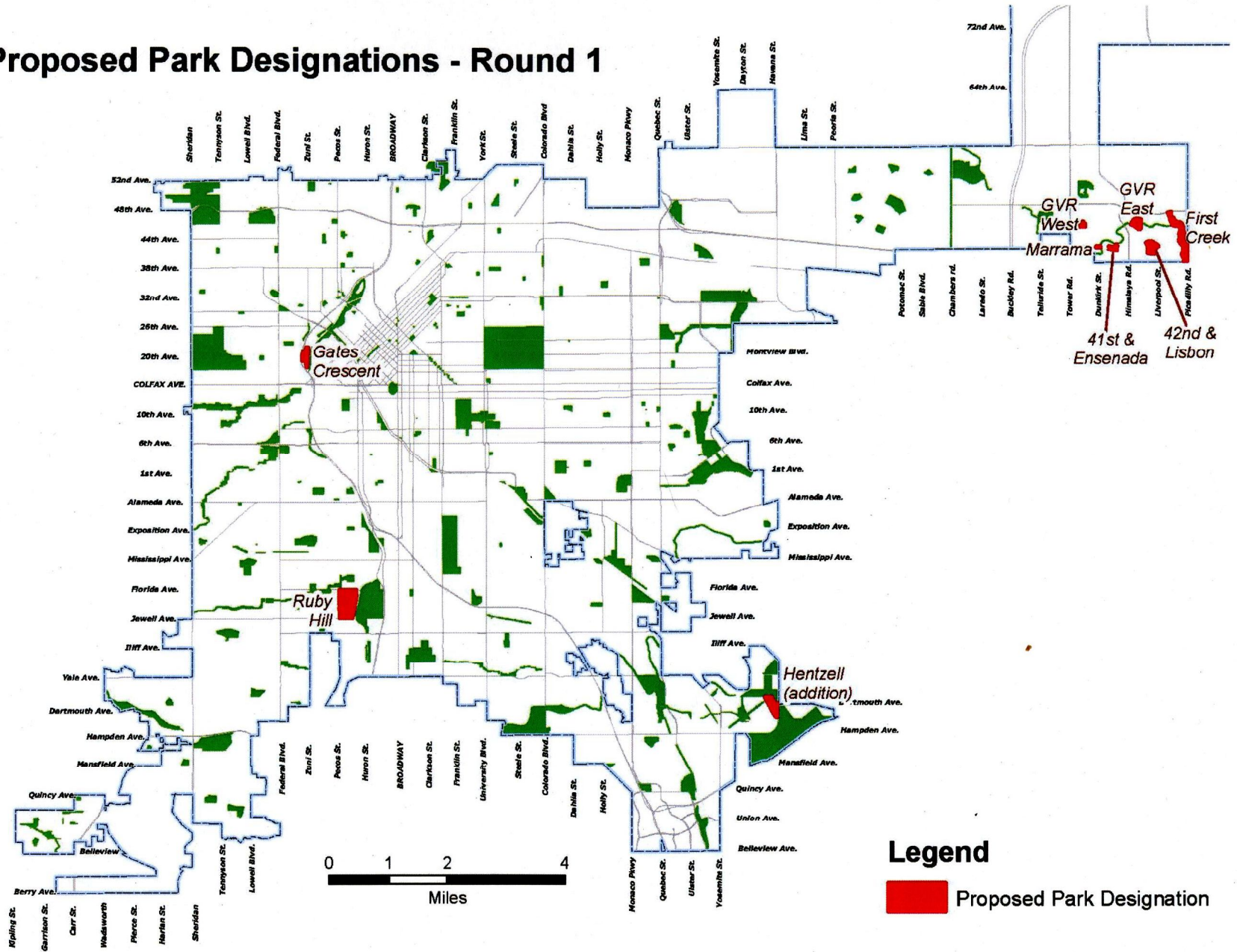
City Council Districts & Park Maintenance Districts



Currently Designated Parks



Proposed Park Designations - Round 1

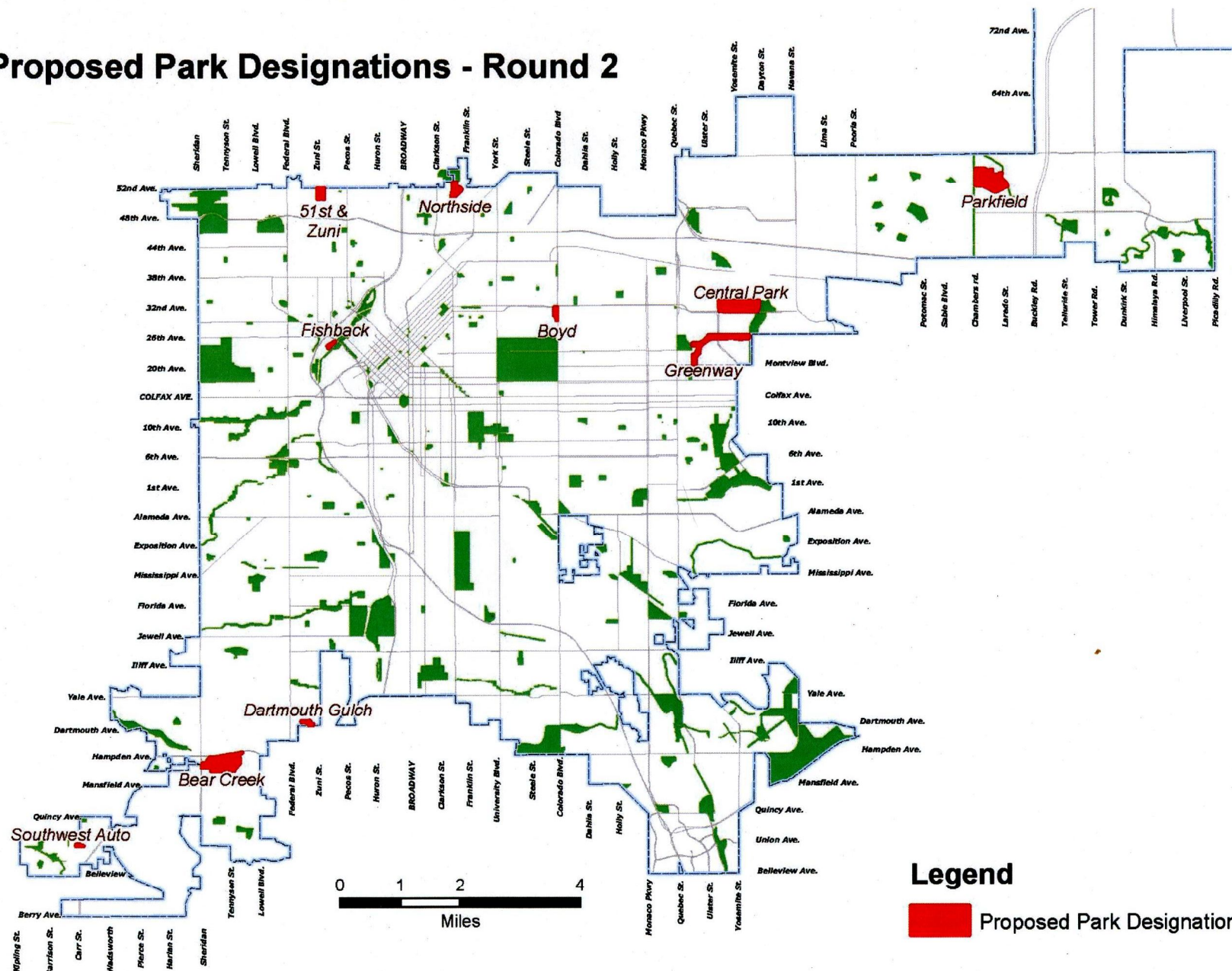


Proposed Designations – Round 1

LOCATION NAME	PARK TYPE	GIS ACRES	MAINT DIST	COUNCIL DIST
First Creek	Open Space	37.1	NE	11
Gates Crescent Park	Neighborhood	11.5	NW	1
Green Valley Ranch East Park	Community	13.4	NE	11
Green Valley Ranch West Park	Neighborhood	3.5	NE	11
Hentzell (addition)	Open Space	15.9	E	4
Marrama Park	Pocket	1.5	NE	11
Ruby Hill Park	Regional	81.9	SW	7
Unnamed 41st & Ensenada Park	Neighborhood	5.1	NE	11
Unnamed 42nd & Lisbon Park	Neighborhood	18.0	NE	11

Total Acres:	187.9
---------------------	--------------

Proposed Park Designations - Round 2



Proposed Designations – Round 2

LOCATION NAME	PARK TYPE	GIS ACRES	MAINT DIST	COUNCIL DIST
Bear Creek Park	Regional	86.4	SW	2
Boyd (J. Langston) Park	Neighborhood	4.9	NW	8
Dartmouth Gulch Park	Open Space	3.3	SW	7
Fishback Park	Neighborhood	2.2	NW	1
Northside Park	Neighborhood	14.3	NW	9
Southwest Auto Park	Pocket	1.5	SW	2
Unnamed 51st & Zuni Park	Neighborhood	12.8	NW	9
Central Park	Regional	78.9	NE	11
Greenway Park	Community	39.3	NE	11
Parkfield	Regional	88.3	NE	11

Total Acres: 332.1
