

# Denver Parks & Recreation



Proposed Park Designations  
Fall 2013

# Park System History

---

- ❑ Park System had its origin in 1858 with the cities of Auraria, Denver City and Highland at the confluence of the South Platte River and Cherry Creek
- ❑ First park was Curtis Park in 1868
- ❑ First Park Board was created in 1893
- ❑ The Park Board directed the management and development of the park system until about 1904
- ❑ Under Mayor Speer, a charter amendment in 1904 was adopted that created the Department of "Improvements and Parks"
- ❑ In 1910 the Mountain Park System was established
- ❑ In 1956 the Department of Parks and Recreation was created.
- ❑ Parcels that were acquired, developed or treated as a park at this time (1956) became designated under this charter amendment
- ❑ Subsequent park designations are accomplished through the City Council ordinance process

# Park Designation Considerations

---

- ❑ Supports a master plan (City Park)
- ❑ Has historical, cultural, ecological, or educational significance (Civic Center, Cheesman)
- ❑ Preservation of key visual corridors or scenic vistas (Cramner)
- ❑ Park facilities have been or are planned to be constructed (13<sup>th</sup> & Xenia, New Westwood Park)
- ❑ Area infrastructure / utilities are not in a state of flux that may impact or change the park (Hampden Heights Park)
- ❑ There are no title / ownership issues that cast a cloud on the City's title or right to possession of the park
- ❑ No pending or anticipated plans for making/expanding non-park uses within the park. (Northside, Heron Pond, 52<sup>nd</sup> & Emerson)

# Citywide Park Acres in January 2013

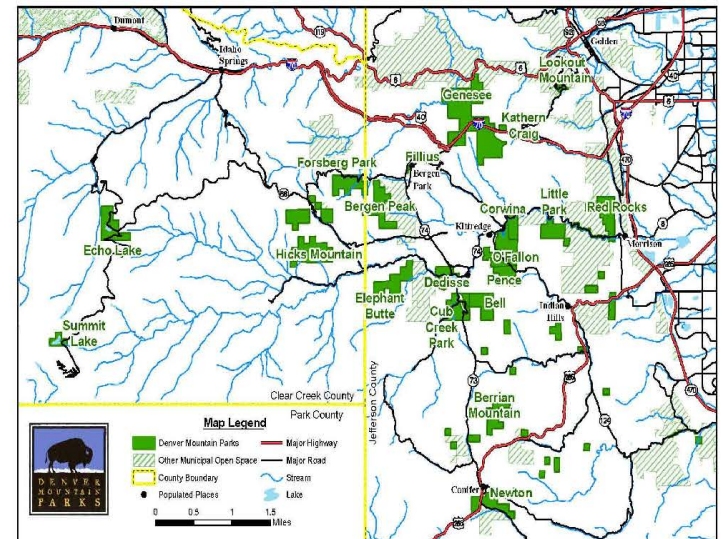
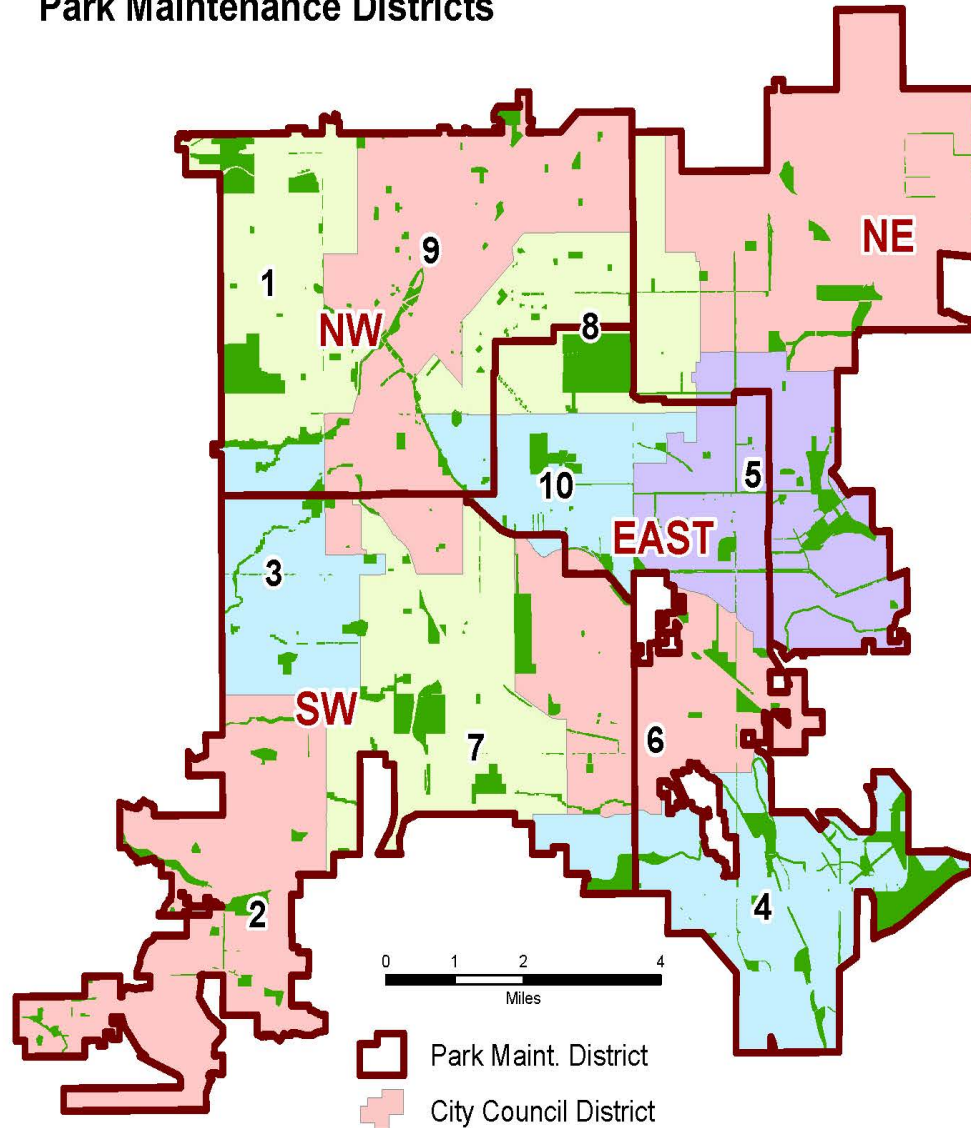
---

Council District	Acres*	2010 Population	Acres per 1000 Residents
1	681	45,723	15
2	346	54,682	6
3	221	50,157	4
4	964	52,998	18
5	515	56,648	9
6	488	49,907	10
7	589	52,341	11
8	550	54,163	10
9	429	51,288	8
10	230	49,013	5
11	876	83,238	11

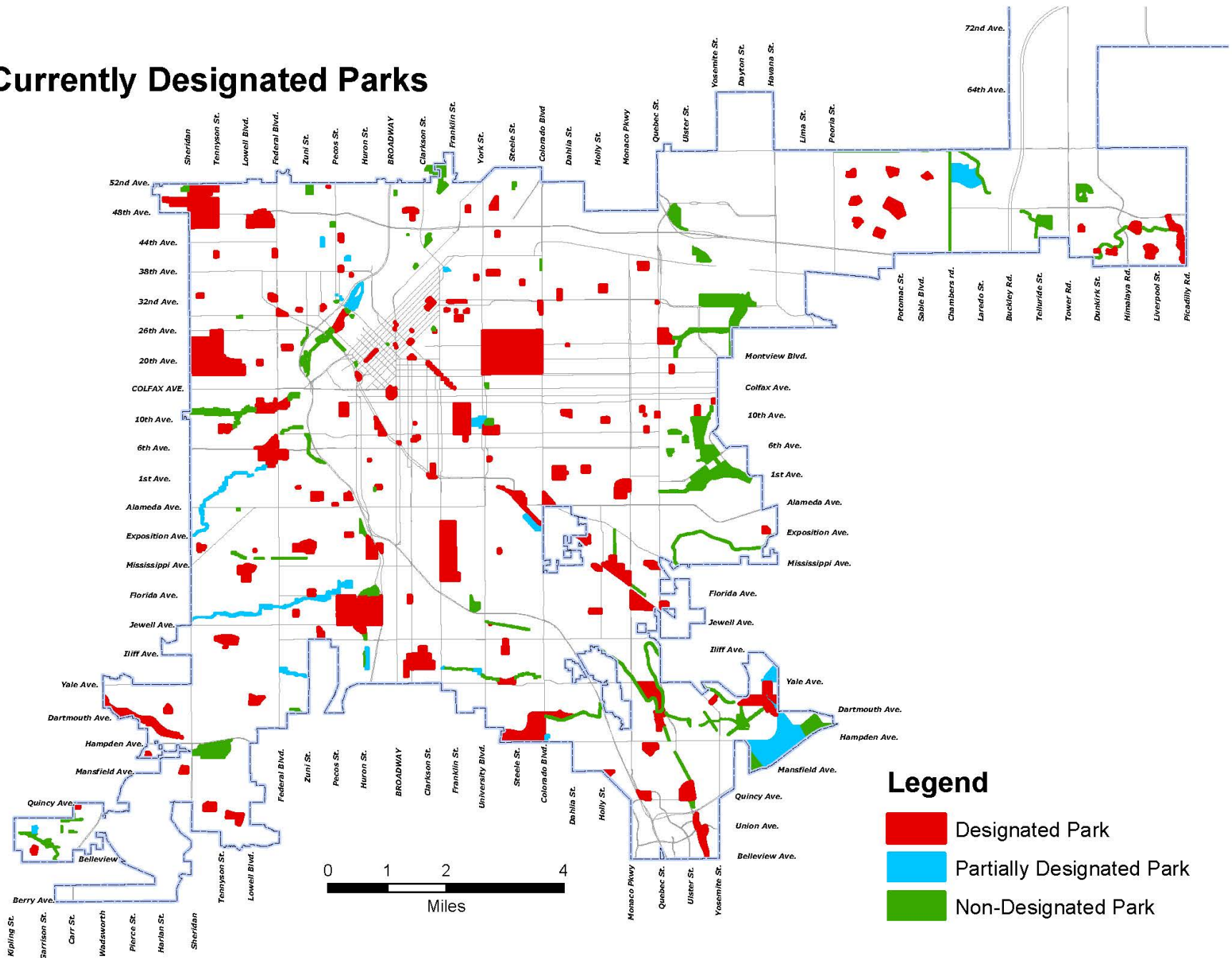
Citywide	5,889	600,158	10
Mountain Parks	14,200	600,158	24
DPR System	20,089	600,158	33

\* Includes all classifications: Park, Golf, Open Space, Trails, Parkways, Medians, and Natural Areas

# City Council Districts & Park Maintenance Districts



# Currently Designated Parks





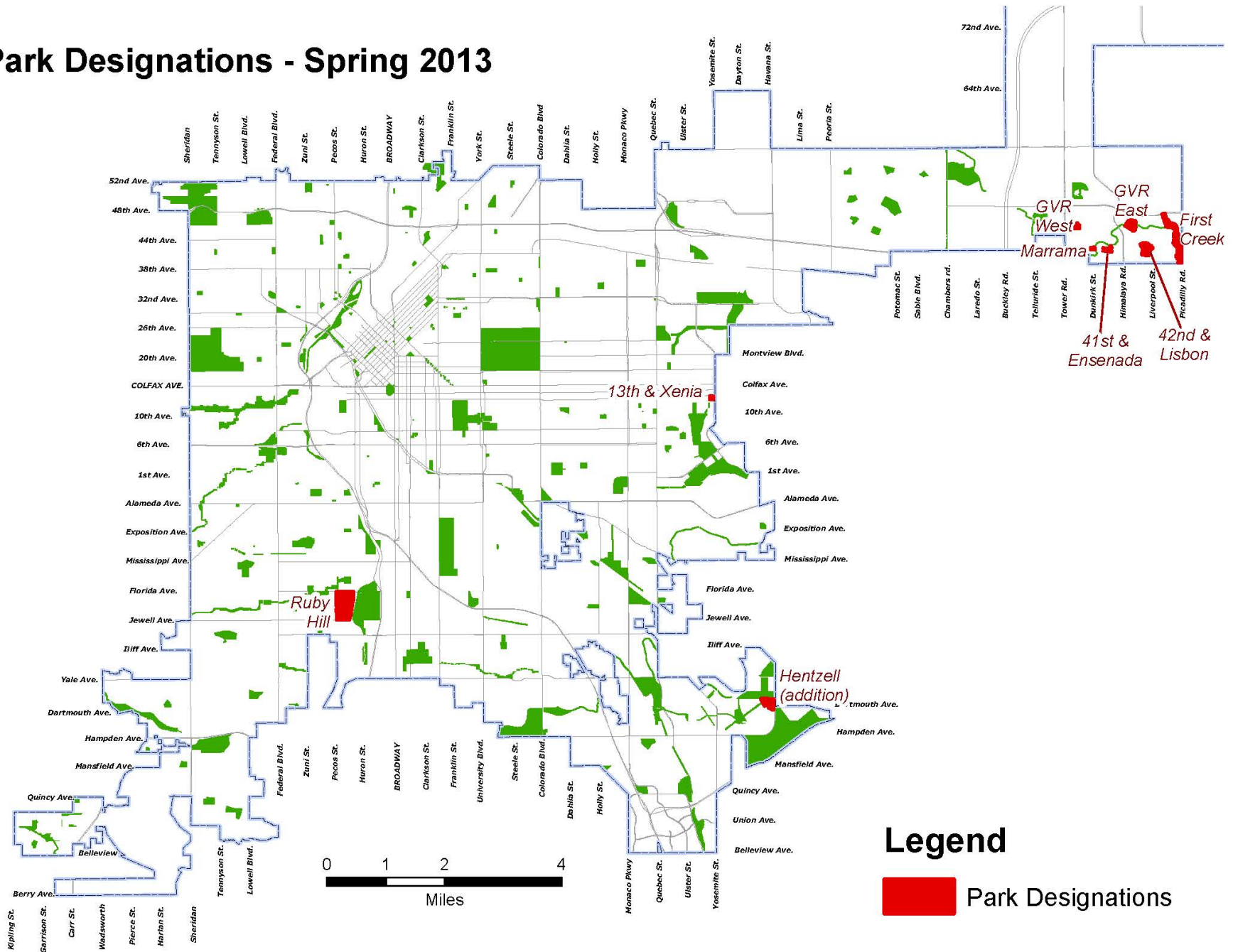
# Designations – Spring 2013

---

LOCATION NAME	PARK TYPE	GIS ACRES	MAINT DIST	COUNCIL DIST
First Creek	Open Space	37.1	NE	11
Green Valley Ranch East Park	Community	13.4	NE	11
Green Valley Ranch West Park	Neighborhood	3.5	NE	11
Marrama Park	Pocket	1.5	NE	11
Unnamed 41st & Ensenada Park	Neighborhood	5.1	NE	11
Unnamed 42nd & Lisbon Park	Neighborhood	18.0	NE	11
13th & Xenia Park	Neighborhood	2.1	E	5
Ruby Hill Park	Regional	81.9	SW	7
Hentzell (addition)	Open Space	15.9	E	4

<b>Total Acres:</b>	<b>178.5</b>
---------------------	--------------

# Park Designations - Spring 2013





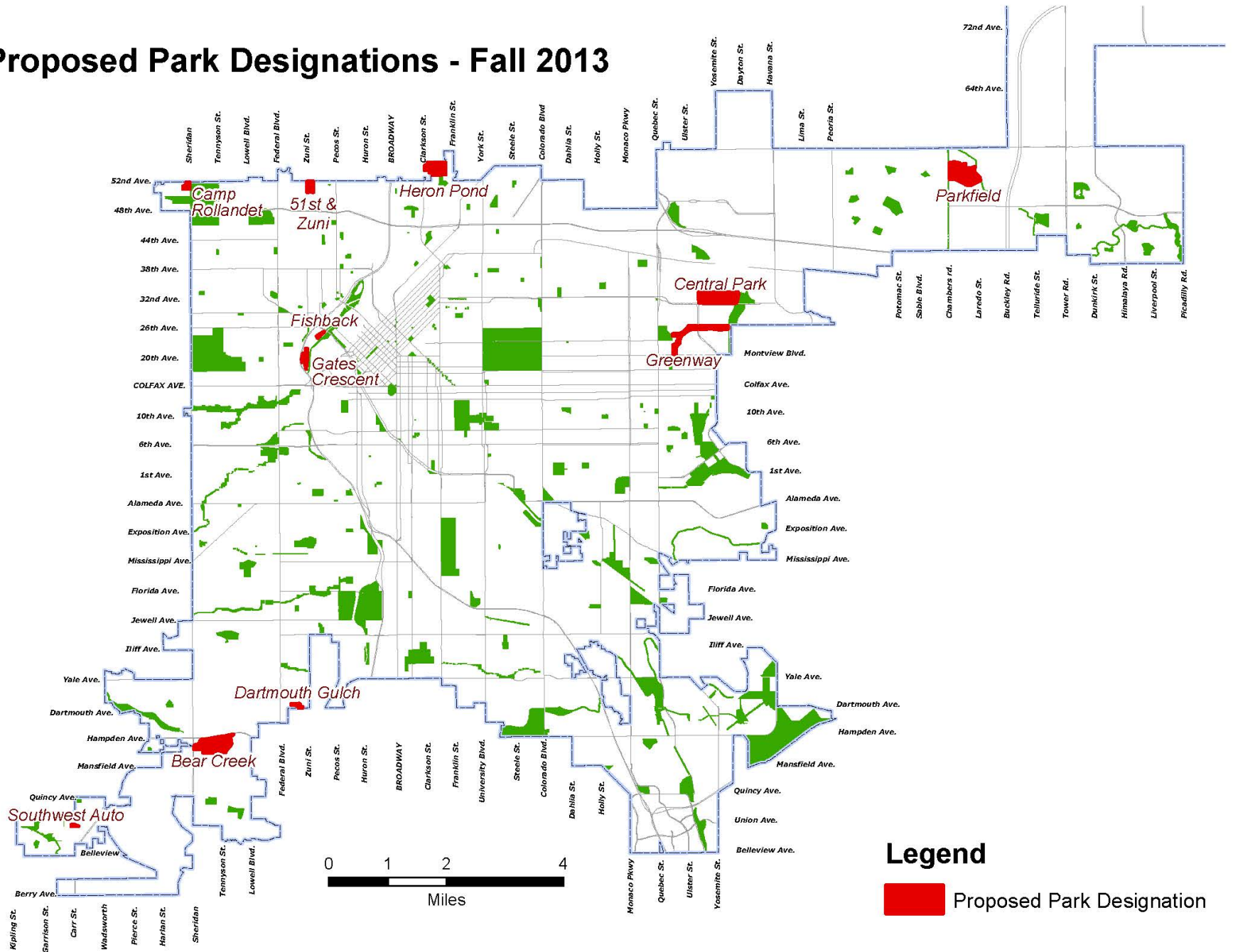
# Proposed Designations – Fall 2013

---

LOCATION NAME	PARK TYPE	GIS ACRES	MAINT DIST	COUNCIL DIST
Bear Creek Park	Regional	79.0	SW	2
Dartmouth Gulch Park	Open Space	3.3	SW	7
Fishback Park	Neighborhood	2.2	NW	1
Heron Pond	Open Space	43.0	NW	9
Southwest Auto Park	Pocket	1.5	SW	2
Unnamed 51st & Zuni Park	Neighborhood	12.8	NW	9
Central Park	Regional	78.9	NE	11
Greenway Park	Community	40.3	NE	11
Parkfield	Regional	38.3	NE	11
Gates Crescent Park	Neighborhood	10.7	NW	1
Camp Rollandet	Open Space	7.0	NW	1

<b>Total Acres:</b>	<b>317.0</b>
---------------------	--------------

# Proposed Park Designations - Fall 2013







## Bear Creek Park

Aerial Series - March 2013

Aerial Imagery - 2012

1 inch = 250 feet at 11x17

100

Map Scale In Feet







## Dartmouth Gulch Park

Aerial Series - March 2013

Aerial Imagery - 2012

1 inch = 80 feet at 11x17

100

Map Scale In Feet







## Fishback Park

Aerial Series - March 2013

Aerial Imagery - 2012

1 inch = 100 feet at 11x17

100

Map Scale In Feet







## Heron Pond - Heller Open Space

Aerial Series - March 2013

Aerial Imagery - 2012

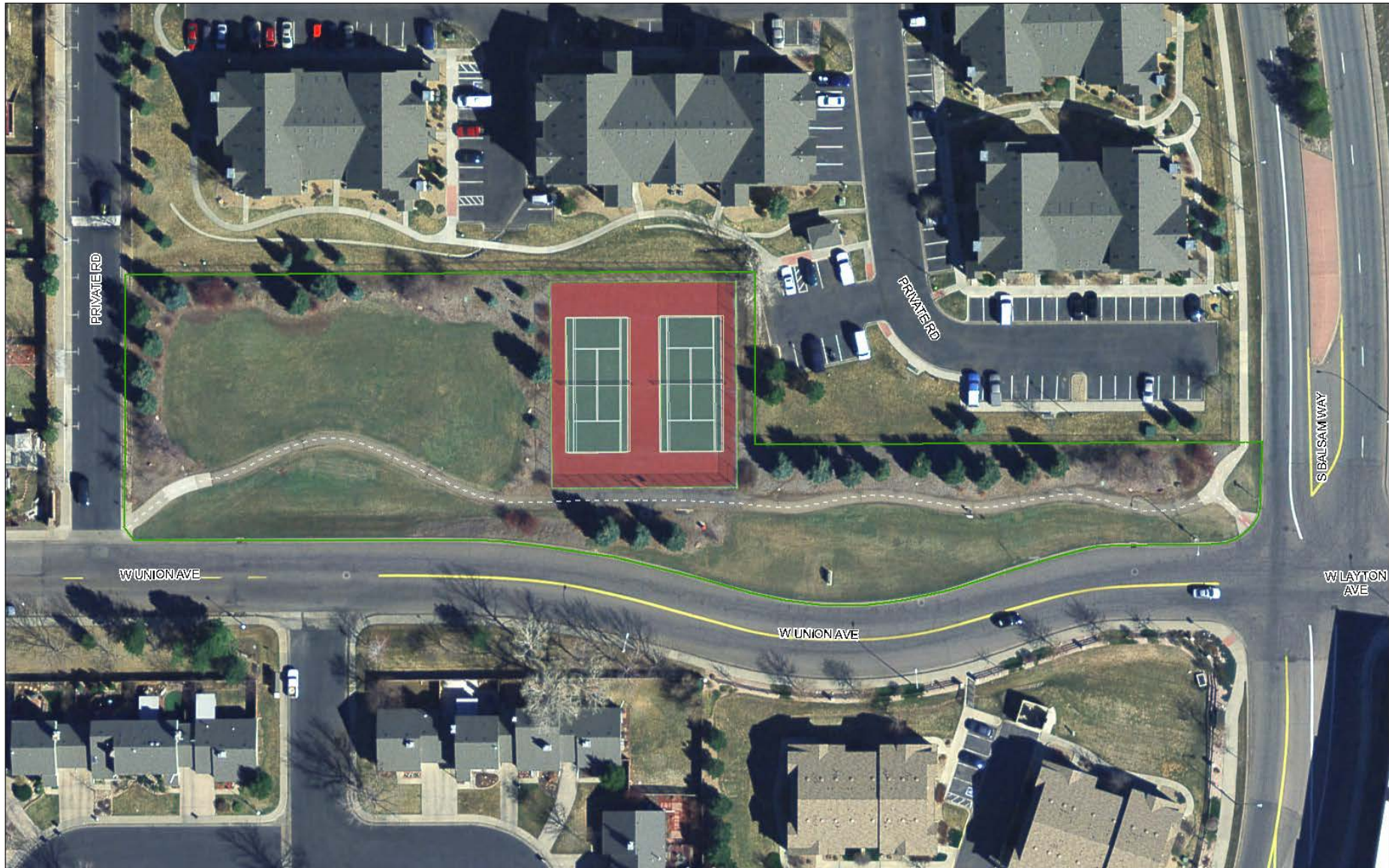
1 inch = 150 feet at 11x17

100

Map Scale In Feet







## Southwest Auto Park

Aerial Series - March 2013

Aerial Imagery - 2012

1 inch = 50 feet at 11x17

100

Map Scale In Feet







## Unnamed 51st & Zuni Park

Aerial Series - March 2013

Aerial Imagery - 2012

1 inch = 100 feet at 11x17

100

Map Scale In Feet







## Aerial Series - March 2013

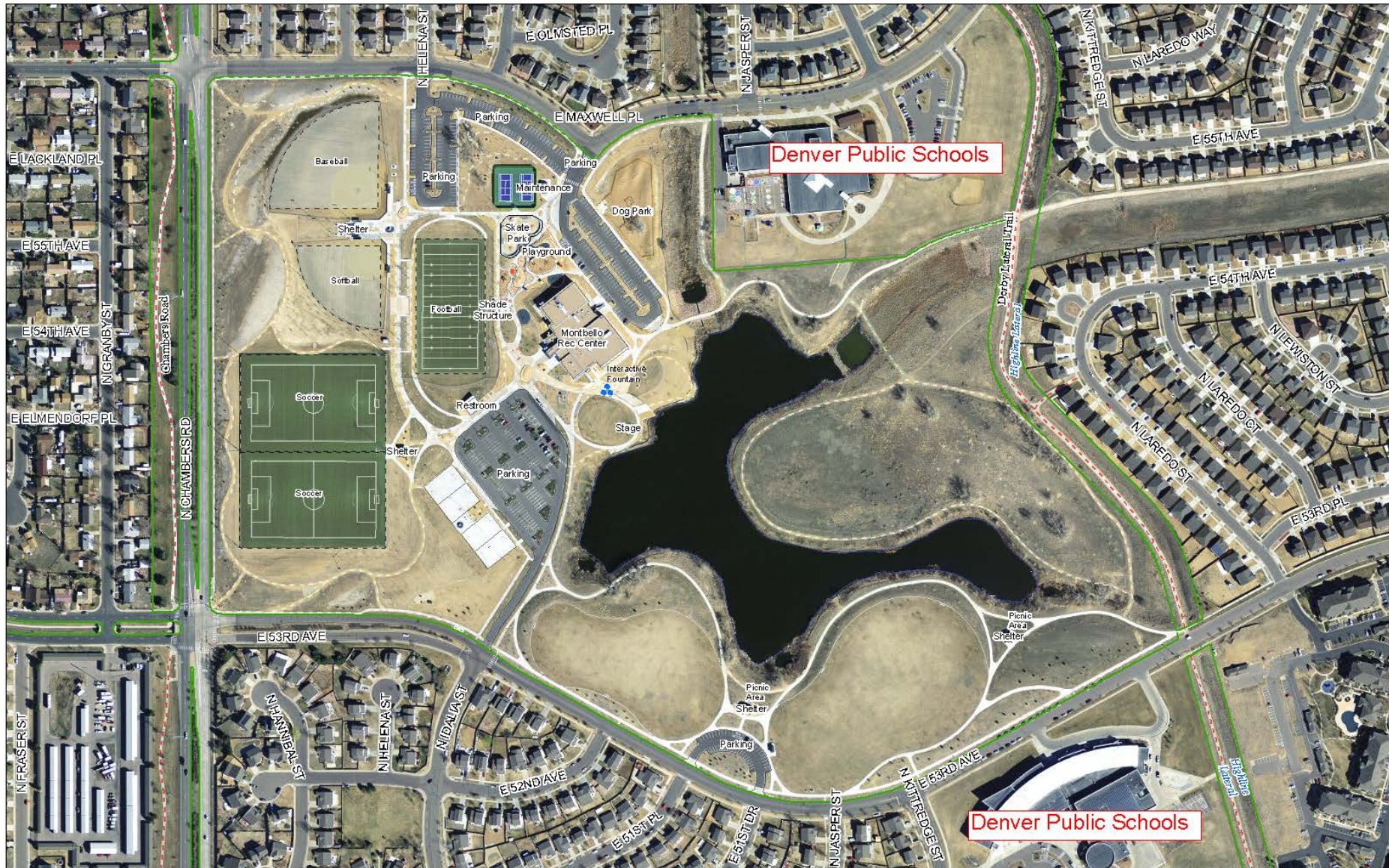
1 inch = 250 feet at 11x17  
100  
Map Scale In Feet











## Parkfield

Aerial Series - March 2013

Aerial Imagery - 2012

1 inch = 250 feet at 11x17

100  
Map Scale In Feet







## Gates Crescent Park

Aerial Series - March 2013

Aerial Imagery - 2012

1 inch = 150 feet at 11x17

100  
Map Scale In Feet







**Camp Rollendet**

Aerial Series - March 2013

Aerial Imagery - 2012

1 inch = 100 feet at 11x17  
100  
Map Scale In Feet



# Park Designation Status

---

- Beginning of 2013
  - 69% of Parks were already designated
- Spring 2013
  - Approx. 180 acres became designated
  - 73% of system designated as parkland
- Fall 2013
  - Approx. 310 acres to become designated
  - 79% of system will be designated as parkland
  - Approx. 490 acres designated as parkland in 2013
- Spring 2014
  - Approx. 120 acres to become designated
  - 82% of system will be designated as parkland

# Proposed Designations – Spring 2014

---

LOCATION NAME	PARK TYPE	GIS ACRES	MAINT DIST	COUNCIL DIST
Bayaud Park	Neighborhood	7.0	NE	5
City of Ulaanbaatar	Neighborhood	5.1	NE	5
Hampden Heights Park	Community	32.5	East	4
Lakewood / Dry Gulch Park	Community	56.0	NW	1 & 3
Swansea Neighborhood Park	Neighborhood	3.3	NW	9
Unnamed 51st & Broadway	Pocket	1.3	NW	9
Veterans Park	Community	16.3	SW	6

<b>Total Acres:</b>	<b>121.5</b>
---------------------	--------------