



**DENVER**  
THE MILE HIGH CITY

# Denver Parks & Recreation

Proposed Park Designations  
Red Rocks Addition

FOR CITY SERVICES VISIT | CALL  
**DenverGov.org** | **311**

- Park System had its origin in 1858 with the cities of Auraria, Denver City and Highland at the confluence of the South Platte River and Cherry Creek
- First park was Curtis Park in 1868
- First Park Board was created in 1893
- The Park Board directed the management and development of the park system until about 1904
- Under Mayor Speer, a charter amendment in 1904 was adopted that created the Department of “Improvements and Parks”
- In 1910 the Mountain Park System was established
- In 1956 the Department of Parks and Recreation was created.
- Parcels that were acquired, developed or treated as a park at this time (1956) became designated under this charter amendment
- Subsequent park designations are accomplished through the City Council ordinance process



# Designation Considerations

- Supports a master plan (City Park)
- Has historical, cultural, ecological, or educational significance (Civic Center, Cheesman)
- Preservation of key visual corridors or scenic vistas (Cranmer)
- Park facilities have been or are planned to be constructed (New Freedom, Cuatro Vientos)
- Area infrastructure / utilities are not in a state of flux that may impact or change the park (Hampden Heights Park)
- There are no title / ownership issues that cast a cloud on the City's title or right to possession of the park
- No pending or anticipated plans for making/expanding non-park uses within the park.



# Urban Park Designation Status

- Beginning of 2013
  - Approximately 68% of Parks were already designated
- 1<sup>st</sup> Round - April 2013
  - Approximately 180 acres became designated
  - Approximately 72% of system designated as parkland
- 2<sup>nd</sup> Round – January 2014
  - Approximately 275 acres became designated
  - Approximately 78% of system designated as parkland
- 3<sup>rd</sup> Round – April 2014
  - Approximately 164 acres became designated
  - Approximately 82% of system designated as parkland
- 4<sup>th</sup> and 5<sup>th</sup> Rounds – November 2014
  - Approximately 42 acres became designated
  - Approximately 84% of system designated as parkland



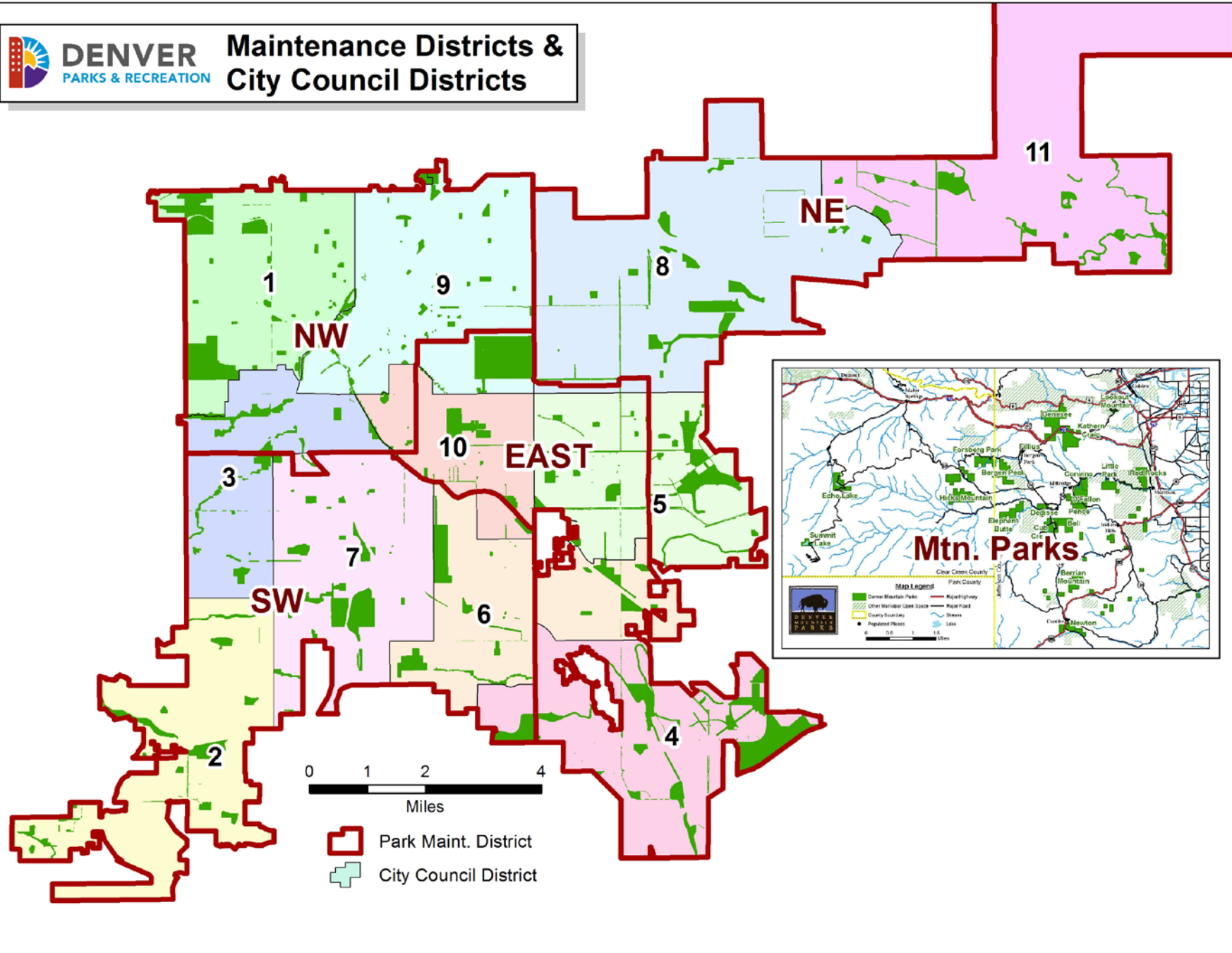
# Urban Park Designation Status

- 6<sup>th</sup> Round – Fall 2015
  - Approximately 88 acres became designated
  - Approximately 85% of system designated as parkland
- 7<sup>th</sup> Round – Spring 2016
  - Approximately 5.9 acres will become designated
  - Approximately 78% of system will be designated as parkland
  - Percentage decreased due to the addition of more than 450 acres to the park system in 2015.
- Red Rocks Park Addition
  - Approximately 98 acres added to Red Rocks will become designated
  - This will complete the designation of the Mountain Park System

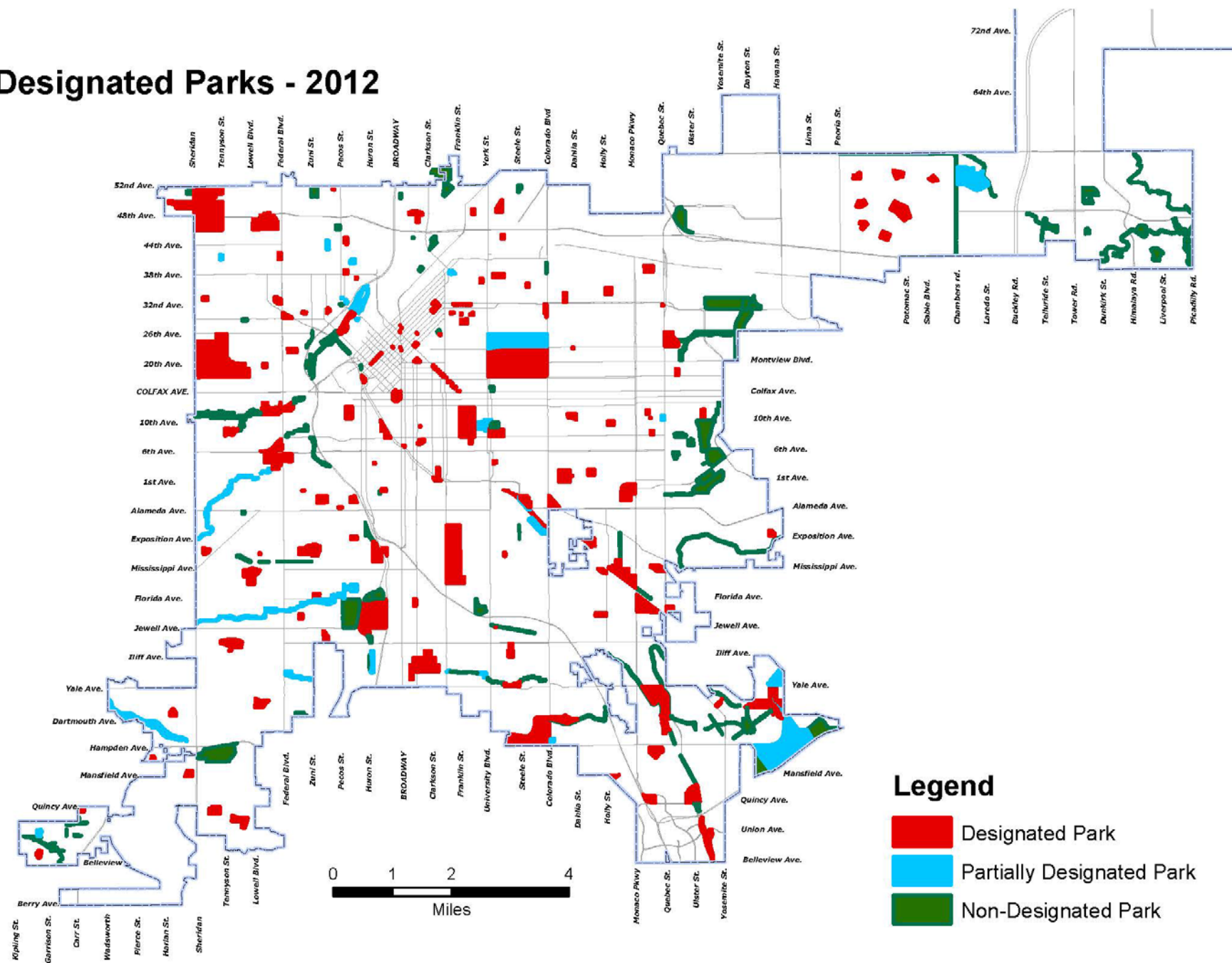


**DENVER**  
PARKS & RECREATION

# Maintenance Districts & City Council Districts

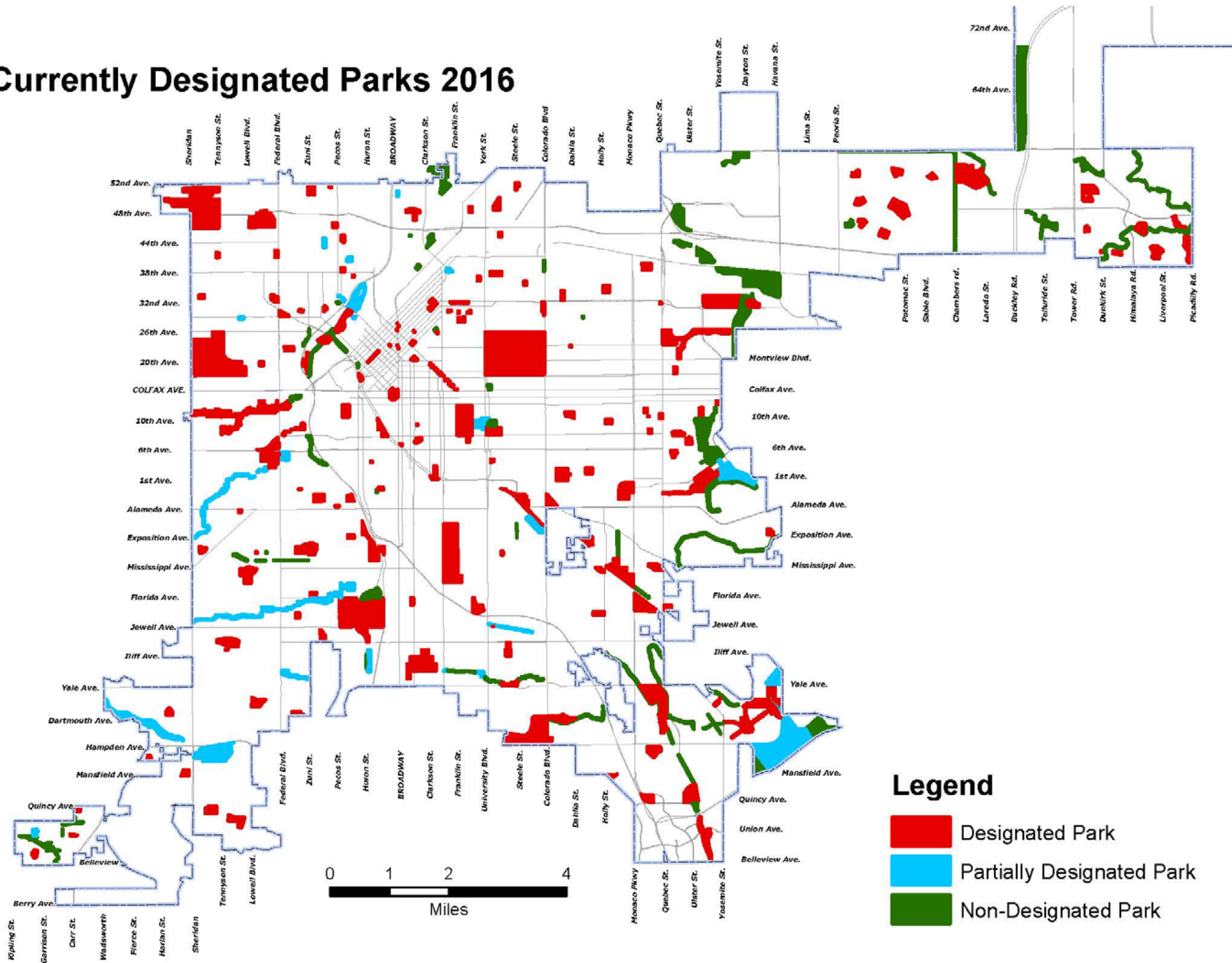


# Designated Parks - 2012





# Currently Designated Parks 2016

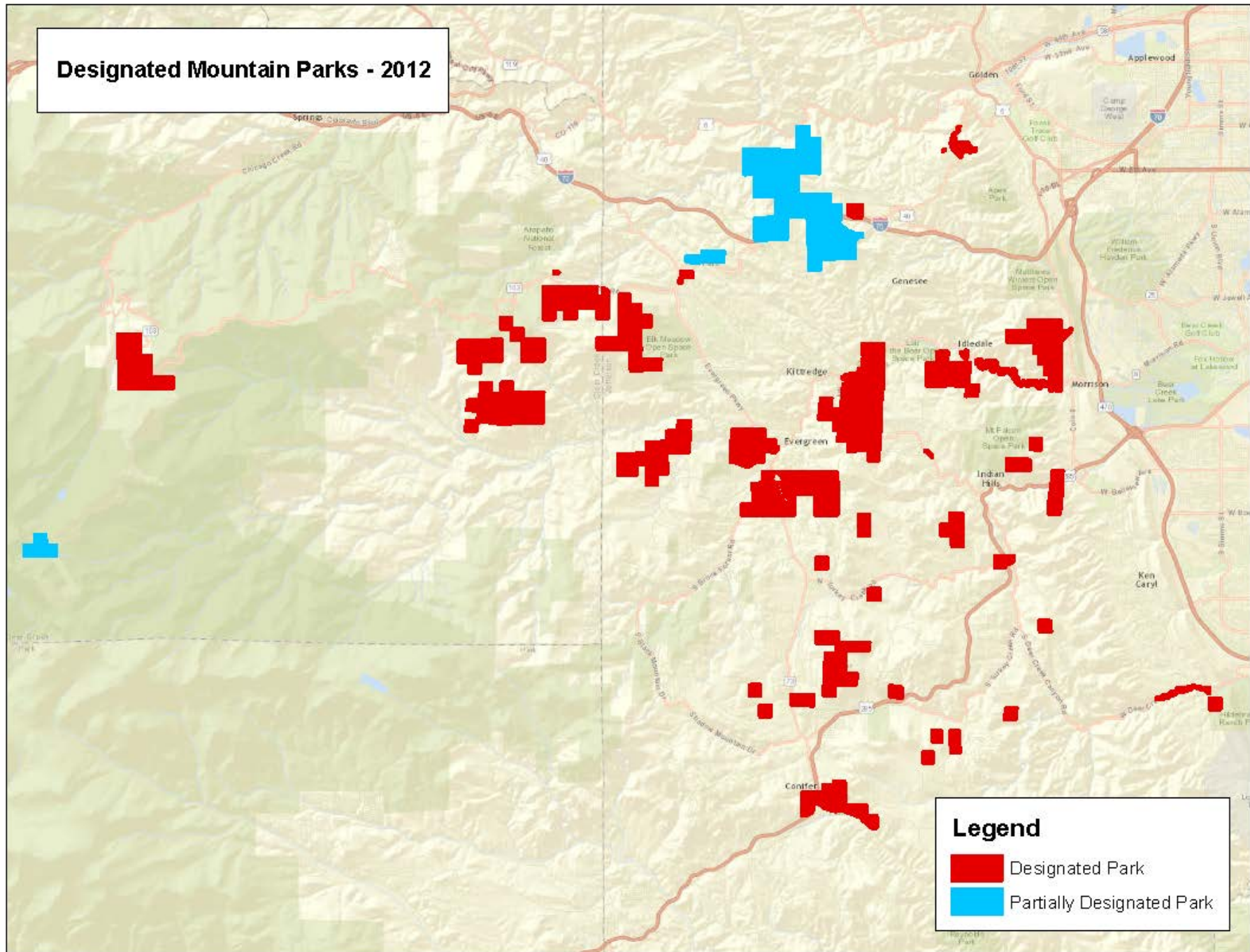


## Legend

- Designated Park
- Partially Designated Park
- Non-Designated Park

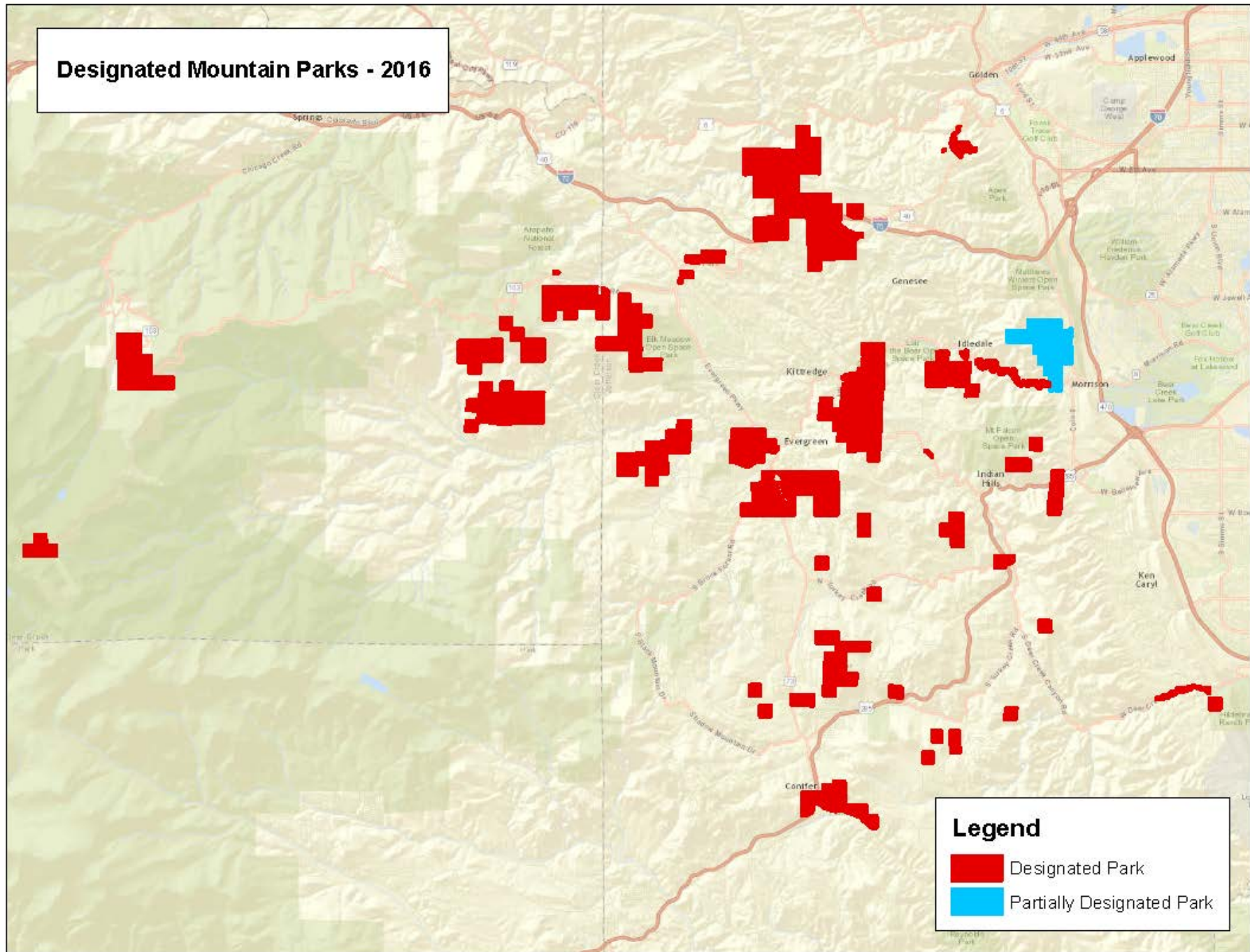


# Designated Mountain Parks - 2012





# Designated Mountain Parks - 2016



## Round 1 Designations - April 2013

LOCATION NAME	PARK TYPE	GIS ACRES	MAINT DIST	COUNCIL DIST
First Creek	Open Space	37.1	NE	11
Green Valley Ranch East	Community	13.4	NE	11
Green Valley Ranch West	Neighborhood	3.5	NE	11
Marrama Park	Pocket	1.5	NE	11
Unnamed 41st & Ensenada	Neighborhood	5.1	NE	11
Unnamed 42nd & Lisbon	Neighborhood	18.0	NE	11
Unnamed 13th & Xenia	Neighborhood	2.1	E	5
Ruby Hill Park	Regional	81.9	SW	7
Hentzell (addition)	Open Space	15.9	E	4

<b>Total Acres:</b>	<b>178.5</b>
---------------------	--------------

## Round 2 Designations - January 2014

LOCATION NAME	PARK TYPE	GIS ACRES	MAINT DIST	COUNCIL DIST
Bear Creek Park	Regional	79.0	SW	2
Dartmouth Gulch Park	Open Space	3.3	SW	7
Fishback Park	Neighborhood	2.2	NW	1
Southwest Auto Park	Pocket	1.5	SW	2
Unnamed 51st & Zuni Park	Neighborhood	12.8	NW	1
Central Park	Regional	78.9	NE	8
Greenway Park	Community	40.3	NE	8
Parkfield	Regional	38.3	NE	11
Gates Crescent Park	Neighborhood	10.7	NW	1
Camp Rollandet	Open Space	7.0	NW	1

<b>Total Acres:</b>	<b>274.0</b>
---------------------	--------------

## Round 3 Designations - April 2014

LOCATION NAME	PARK TYPE	GIS ACRES	MAINT DIST	COUNCIL DIST
Bayaud Park	Neighborhood	7.0	NE	5
Lowry Sports Complex	Athletic Complex	95.2	NE	5
Crescent Park	Neighborhood	7.2	NE	5
Cuatro Vientos/Four Winds Park	Neighborhood	1.2	SW	3
51st & Broadway Park**	Pocket	0.7	NW	9
Swansea Neighborhood Park	Neighborhood	3.3	NW	9
Hampden Heights Park	Community	32.5	E	4
Veterans Park	Community	16.4	SW	6
City Park Golf Addition *	Community	0.5	E	9
Denison Park Addition *	Neighborhood	0.4	E	5

\* Designation of additional parcel to complete Park Designation for the Park site.

\*\* Partial Designation of Park site.

<b>Total Acres:</b>	<b>164</b>
---------------------	------------

## Round 4 Designations - November 2014

LOCATION NAME	PARK TYPE	GIS ACRES	MAINT DIST	COUNCIL DIST
City of Ulaanbaatar	Neighborhood	5.1	NE	5
Montclair East Park	Community	5.6	NE	5
Highland Senior Center Park	Neighborhood	0.9	NW	1
Stapleton Central Park Addition	Community	10.6	NE	8

<b>Total Acres:</b>	<b>22</b>
---------------------	-----------

## Round 5 Designations - November 2014

LOCATION NAME	PARK TYPE	GIS ACRES	MAINT DIST	COUNCIL DIST
Habitat Park	Open Space	7.7	SW	7
Centennial Park	Special Use	5.5	NW	9
Prairie Park	Open Space	6.4	SW	6

<b>Total Acres:</b>	<b>20</b>
---------------------	-----------

## Round 6 Designations - Fall 2015

LOCATION NAME	PARK TYPE	GIS ACRES	MAINT DIST	COUNCIL DIST
Lakewood/Dry Gulch*	Community	52.0	NW	3
Magna Carta*	Neighborhood	0.2	E	4
Pasquinel's Landing	Neighborhood	3.4	SW	7
Town Center Park	Community	26.2	NE	11
Unnamed 46th & Pecos	Neighborhood	3.5	NW	1
Weir Gulch Marina*	Neighborhood	2.8	NW	3

<b>Total Acres:</b>	<b>88</b>
---------------------	-----------

\* Portion of Park to be Designated



## Round 7 Designations - Spring 2016

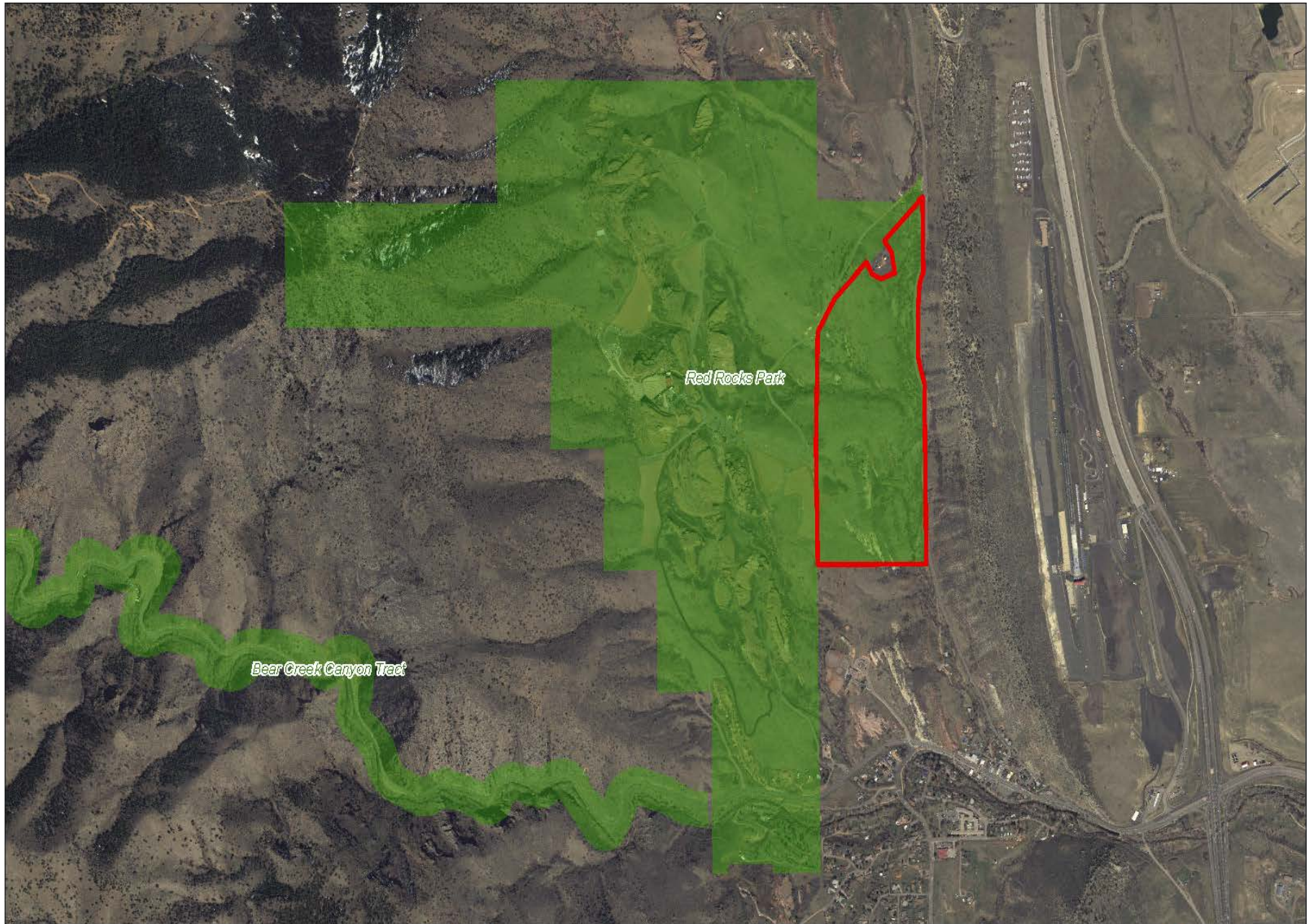
LOCATION NAME	PARK TYPE	GIS ACRES	MAINT DIST	COUNCIL DIST
Bear Valley Park (Duke Parcel)*	Community	1.0	SW	2
Chavez Park (Vacated Alley)*	Neighborhood	0.02	NW	1
City of Karmiel Park (Vacated ROW)*	Neighborhood	0.2	East	10
Summit Lake Park (Addition)*	Mountain	1.83	MP	N/A
Genesee Park (Ricker Parcel)*	Mountain	0.26	MP	N/A
Fillius Park (Rowely Tract)*	Mountain	2.62	MP	N/A

<b>Total Acres:</b>	<b>5.9</b>
---------------------	------------

\* Portion of Park to be Designated

- Designation of parkland from 1956 to 2012 – 56 year time span: approximately 600 acres
- Designation of parkland form 2013 to 2016 – 4 year time span: approximately 850 acres (including Red Rocks parcel)
- Park and Open Space acreage added to the Denver Parks system from 2013 to 2016: approximately 630 acres



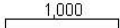


# Red Rocks Park

Aerial Imagery - 2014

-  Designation Boundary
-  Park Boundary

1 inch = 1,000 feet at 11x17

 1,000  
Map Scale In Feet







- Acquired in 1928 from John Brisben Walker.
- Park contained 640 acres
- Adjacent Property acquired in 2000 by Mayor Wellington Webb Administration
- Red Rocks Amphitheatre built 1936-1941 by CCC
  - Denver Architect Burnham Hoyt
- Location of the Civilian Conservation Corp. (CCC) Camp at Morrison
- More than one million visitors each year
- Park Amenities
  - Trading Post, Picnic Sites, Geologic Marker, 2 Miles of Trails, City views

