

# SOUTHERN PLATTE VALLEY DENVER, COLORADO SECTION 1135 FEASIBILITY STUDY MODIFICATIONS FOR IMPROVEMENT OF THE ENVIRONMENT

Jennifer Williams, PE  
Senior Engineer  
City & County of Denver

Jeff Bohlken  
Project Manager  
USACE - Omaha District

August 22, 2018



*"The views, opinions and findings contained in this report are those of the authors(s) and should not be construed as an official Department of the Army position, policy or decision, unless so designated by other official documentation."*



**US Army Corps  
of Engineers.**



# PUBLIC MEETING PURPOSE

- Study Overview
- Recommended Plan
- Schedule
- Next Steps



US Army Corps  
of Engineers.



# STUDY OVERVIEW

## ▪ How are we studying this?

- Section 1135 of the Water Resources Development Act of 1986
- Letter of request received from City and County of Denver (June 22, 2010)

## ▪ What is Section 1135?

- Authorizes the Corps of Engineers to implement structural or operational changes to existing Corps projects for restoration or enhancement of environmental values.
- Study area is downstream of Bear Creek and Chatfield Dams, which have significantly altered the hydrology in the study area.

## ▪ Who are the sponsors?

- City and County of Denver

## ▪ How long will the study take?

- Expected Completion Winter of 2018



US Army Corps  
of Engineers.





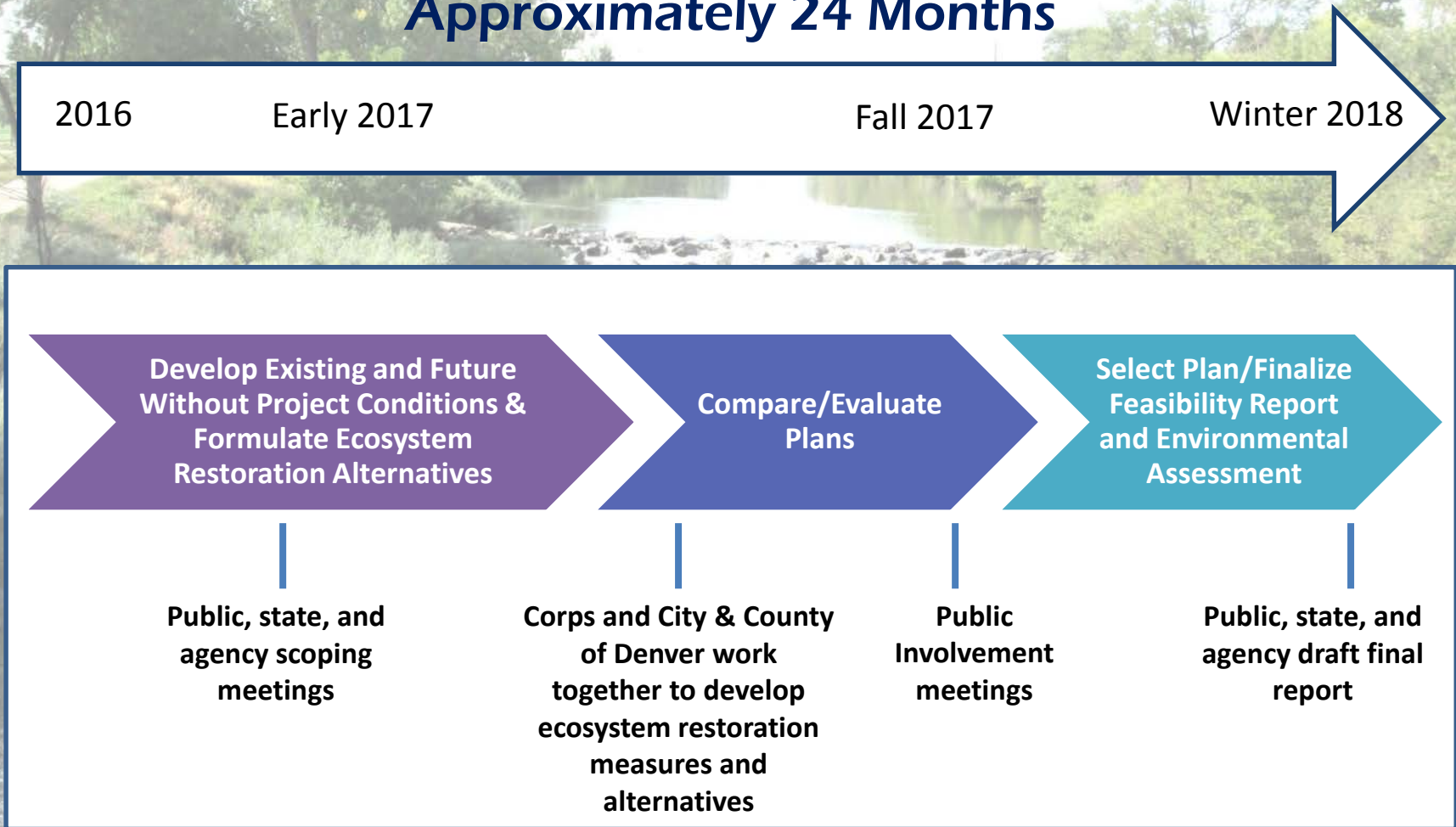
# STUDY AREA

There are 3 reaches:

1. West Mississippi Avenue to West Florida Avenue
2. West Florida Avenue to West Evans Avenue
3. West Evans Avenue to West Yale Avenue

# Study Schedule

Approximately 24 Months



# PLAN COMPONENTS – RIPARIAN & AQUATICS

## Riparian/wetland components

- **Reach 1:**
  - Remove invasive species & replace with native vegetation
- **Reach 2:**
  - Re-vegetate east & west bank with native species
  - Remove invasive species & replace with native vegetation
- **Reach 3:**
  - Excavate bank to create wetland/riparian complex
  - Excavate bank to create wetland/riparian complex & create two side channels



## Aquatics components

- **Reach 1:**
  - In-stream dikes, cross vanes, boulder clusters & rootwad complexes
  - Modify Overland drop structure
- **Reach 2:**

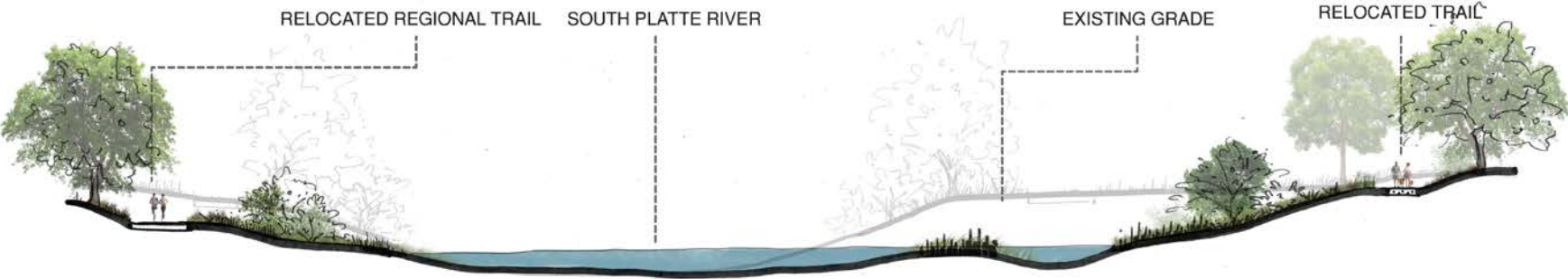
No Planned Aquatic Alternatives
- **Reach 3:**
  - In-stream dikes, cross vanes, boulder clusters & rootwad complexes
  - Modify Xcel Energy drop structure



US Army Corps  
of Engineers.



# PLAN COMPONENTS – GRANT FRONTIER SOUTH



# ANCILLARY RECREATION PLAN

- Section 1135 authorizes ancillary recreation opportunities that complement ecosystem restoration.
- Components include:
  - River Overlook at Harvard Gulch Outfall
  - Boardwalk trail to a habitat island
  - Educational signage



HARVARD GULCH OUTFALL  
CONCEPTUAL PERSPECTIVE



education



overlooks



trails



seating



US Army Corps  
of Engineers.





# TOTAL PROJECT COST

<b>Cost Breakdown</b>	
Total Project Cost	\$12,400,000
Federal Cost Share (75%)*	\$9,000,000
Local Sponsor Cost Share (25%)*	\$3,400,000
LERRDs	\$1,025,000

\*Cost share for the Ecosystem Restoration Project is 75/25 but 50/50 for ancillary recreation.



US Army Corps  
of Engineers.



# NEXT STEPS

<b>Milestone*</b>	<b>Schedule</b>
Public Review & Comments	June 2018
Incorporation of Comments	July-August 2018
Report Approval	September 2018
USACE & Denver Agreement	December 2018
Project Design Begins	January 2019
Design Complete	December 2019
Sponsor Complete LERRD Acquisitions	July 2020
Construction Begins	September 2020
Project Completion	December 2021

\*Tentative schedule based on approvals and available funding



US Army Corps  
of Engineers.



**Draft Report available for review at:**

<http://www.nwo.usace.army.mil/Missions/Civil-Works/Planning/Project-Reports/>



US Army Corps  
of Engineers.



# QUESTIONS?



US Army Corps  
of Engineers.

