
Denver Parks & Recreation

Proposed Park Designations
12th Round – Fall 2020

Park System History

- Park System had its origin in 1858 with the cities of Auraria, Denver City and Highland at the confluence of the South Platte River and Cherry Creek
- First park was Curtis Park in 1868
- First Park Board was created in 1893
- The Park Board directed the management and development of the park system until about 1904
- Under Mayor Speer, a charter amendment in 1904 was adopted that created the Department of “Improvements and Parks”
- In 1910 the Mountain Park System was established
- In 1956 the Department of Parks and Recreation was created.
- Parcels that were acquired, developed or treated as a park at this time (1956) became designated under this charter amendment
- Subsequent park designations are accomplished through the City Council ordinance process

Designation Considerations

- Supports a master plan (City Park)
- Has historical, cultural, ecological, or educational significance (Civic Center, Cheesman)
- Preservation of key visual corridors or scenic vistas (Cranmer)
- Park facilities have been or are planned to be constructed (Arkins Park and Cole-Clayton Greenway)
- Area infrastructure / utilities are not in a state of flux that may impact or change the park (Hampden Heights Park)
- There are no title / ownership issues that cast a cloud on the City's title or right to possession of the park (Kennedy Complex, DEN Open Space)
- No pending or anticipated plans for making/expanding non-park uses within the park.

Park Designation Status

- Beginning of 2013
Approximately 68% of Parks were already designated
- 1st Round - April 2013
Approximately 180 acres became designated
Approximately 72% of system designated as parkland
- 2nd Round – January 2014
Approximately 275 acres became designated
Approximately 78% of system designated as parkland
- 3rd Round – April 2014
Approximately 164 acres became designated
Approximately 82% of system designated as parkland
- 4th and 5th Rounds – November 2014
Approximately 42 acres became designated
Approximately 84% of system designated as parkland

Park Designation Status

- **6th Round – Fall 2015**
 - Approximately 88 acres became designated
 - Approximately 85% of system designated as parkland
- **7th Round – Spring 2016**
 - Approximately 5.9 acres became designated
 - Approximately 78% of system will be designated as parkland
 - Percentage decreased due to the addition of more than 450 acres to the park system in 2015.
- **Red Rocks Park Addition – Summer 2016**
 - Approximately 98 acres added to Red Rocks became designated
 - This will completed the designation of the Mountain Park System
- **8th Round – Fall 2016**
 - Approximately 180 acres will become designated
 - Approximately 81% of the system will be designated as parkland

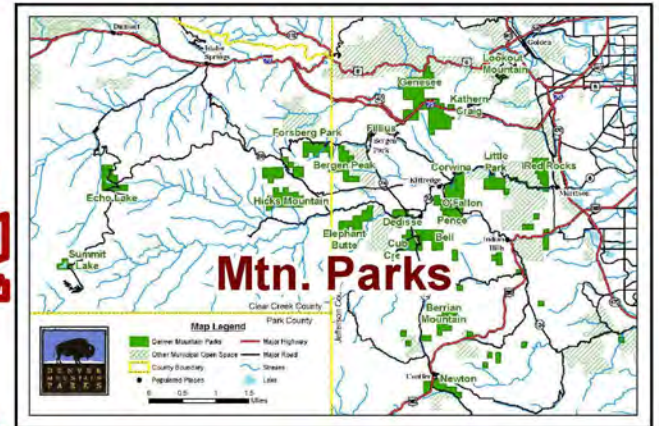
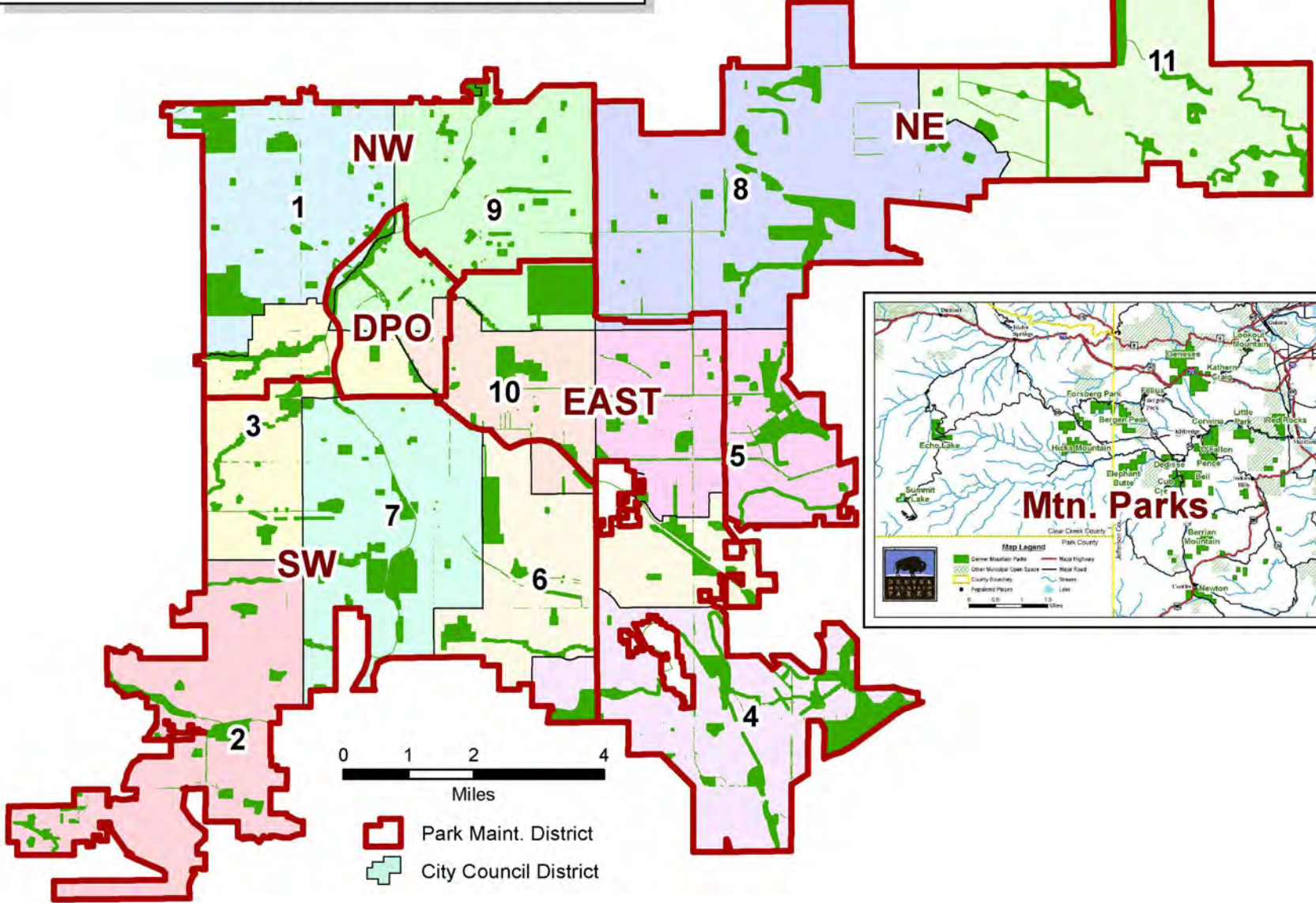
Urban Park Designation Status

- **9th Round – Spring 2017**
 - Approximately 65 acres will become designated
 - Approximately 82% of system designated as parkland
- **10th Round – Fall 2017**
 - Approximately 3.6 acres will become designated
 - Approximately 82% of system designated as parkland
- **11th Round – Winter 2018**
 - Approximately 75 acres will become designated
 - Approximately 84% of system designated as parkland
- **12th Round – Fall 2020**
 - Approximately 99 acres will become designated
 - Approximately 82% of system designated as parkland
 - Added over 100 acres to the system in 2019/2020 – Cole Clayton Greenway, Platte Farm OS, Westwood Rec Center Site, Cherry Creek OS, Northfield Athletic Complex, U-Hills Acquisition

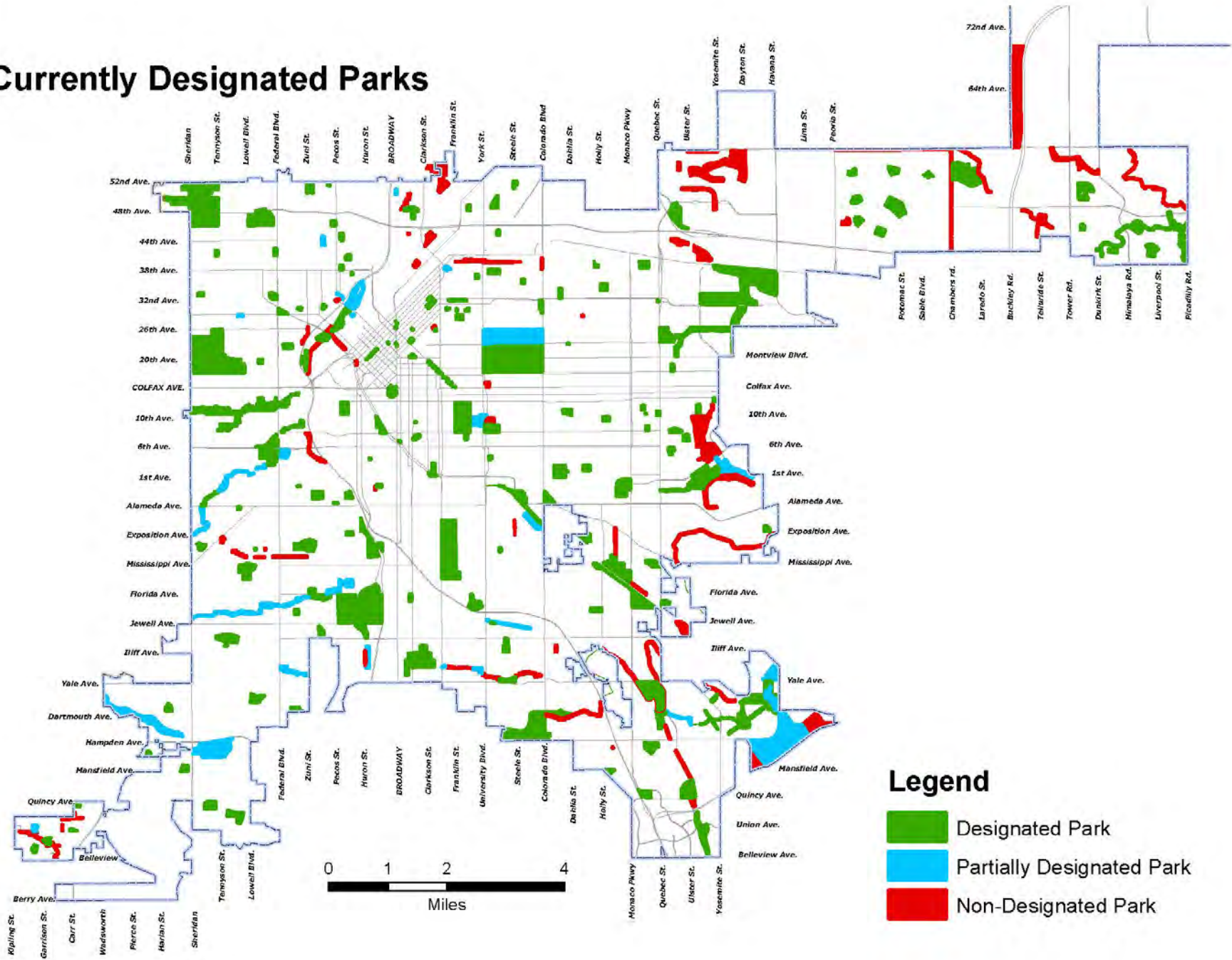


DENVER
PARKS & RECREATION

Maintenance Districts & City Council Districts



Currently Designated Parks



Park Designations

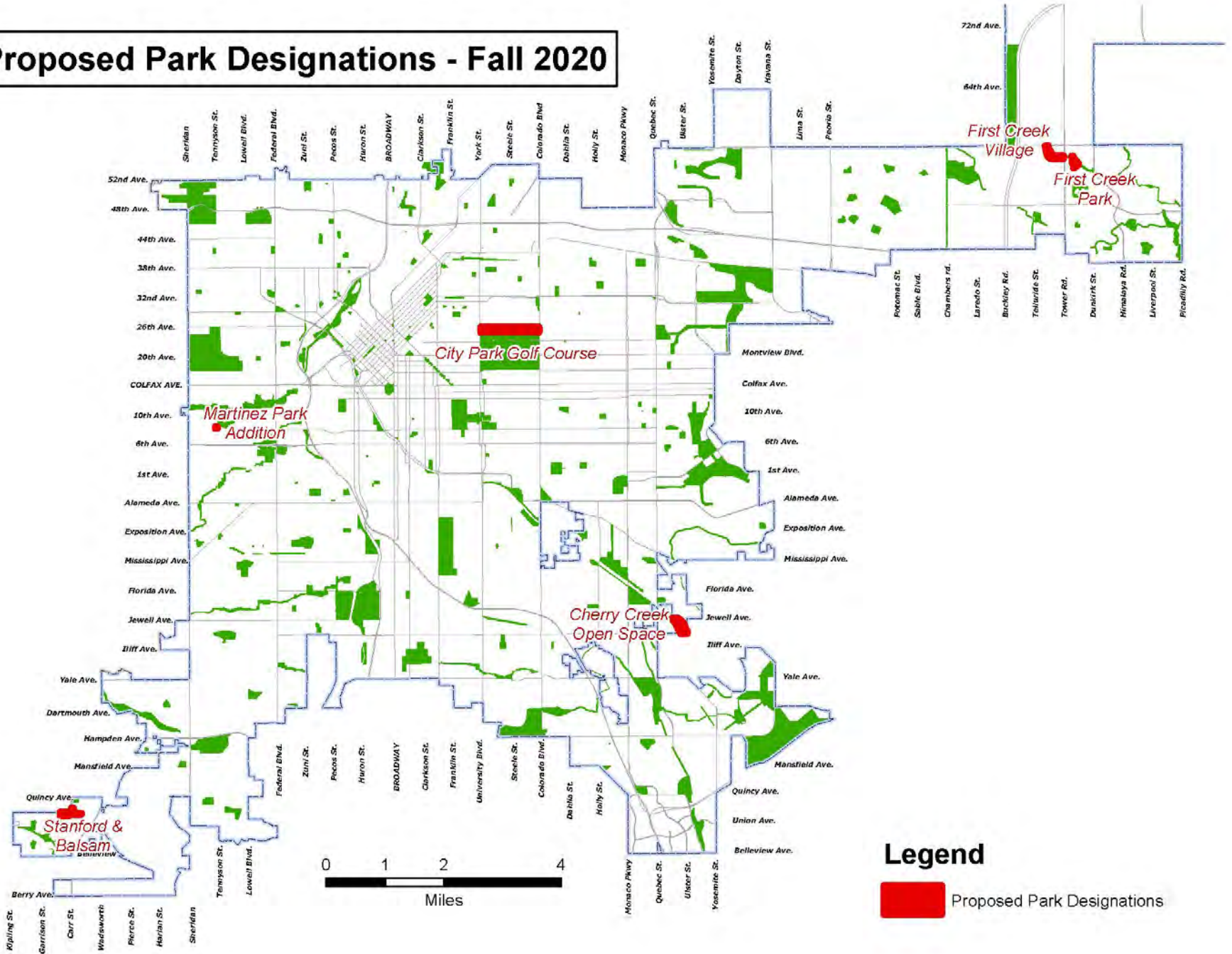
Proposed Designations - Round 12 - Fall 2020

LOCATION NAME	PARK TYPE	GIS ACRES	MAINT DIST	COUNCIL DIST
City Park Golf Course	Golf	49.7	E	9
Stanford & Balsam Park	Open Space	10.1	SW	2
Martinez Park Addition	Neighborhood	0.5	NW	3
First Creek Park	Neighborhood	6.2	NE	11
First Creek Village	Linear	13.8	NE	11
Cherry Creek Open Space	Open Space	18.9	E	6

Total Acres:	99.2
---------------------	-------------

- Designation of parkland from 1956 to 2012 – 56 year time span: approximately 600 acres
- Designation of parkland from 2013 to 2018 – 5 year time span: approximately 1100 acres
- Park and Open Space acreage added to the Denver Parks system from 2013 to 2018: approximately 640 acres plus over 100 acres in 2019/2020

Proposed Park Designations - Fall 2020





City Park Golf Course

Aerial Imagery - 2020

1 inch = 358 feet at 11x17
 100
 Map Scale In Feet





Unnamed Stanford & Balsom Park

Aerial Imagery - 2020

1 inch = 150 feet at 11x17

100
Map Scale In Feet





Martinez Park Addition

Aerial Imagery - 2020

1 inch = 100 feet at 11x17

100
Map Scale In Feet





First Creek Park

Aerial Imagery - 2020

1 inch = 150 feet at 11x17

100
Map Scale In Feet





First Creek Village Open Space

Aerial Imagery - 2020

1 inch = 150 feet at 11x17

100
Map Scale In Feet





Cherry Creek Open Space

Aerial Imagery - 2020

1 inch = 200 feet at 11x17
100
Map Scale In Feet



Questions / Comments

