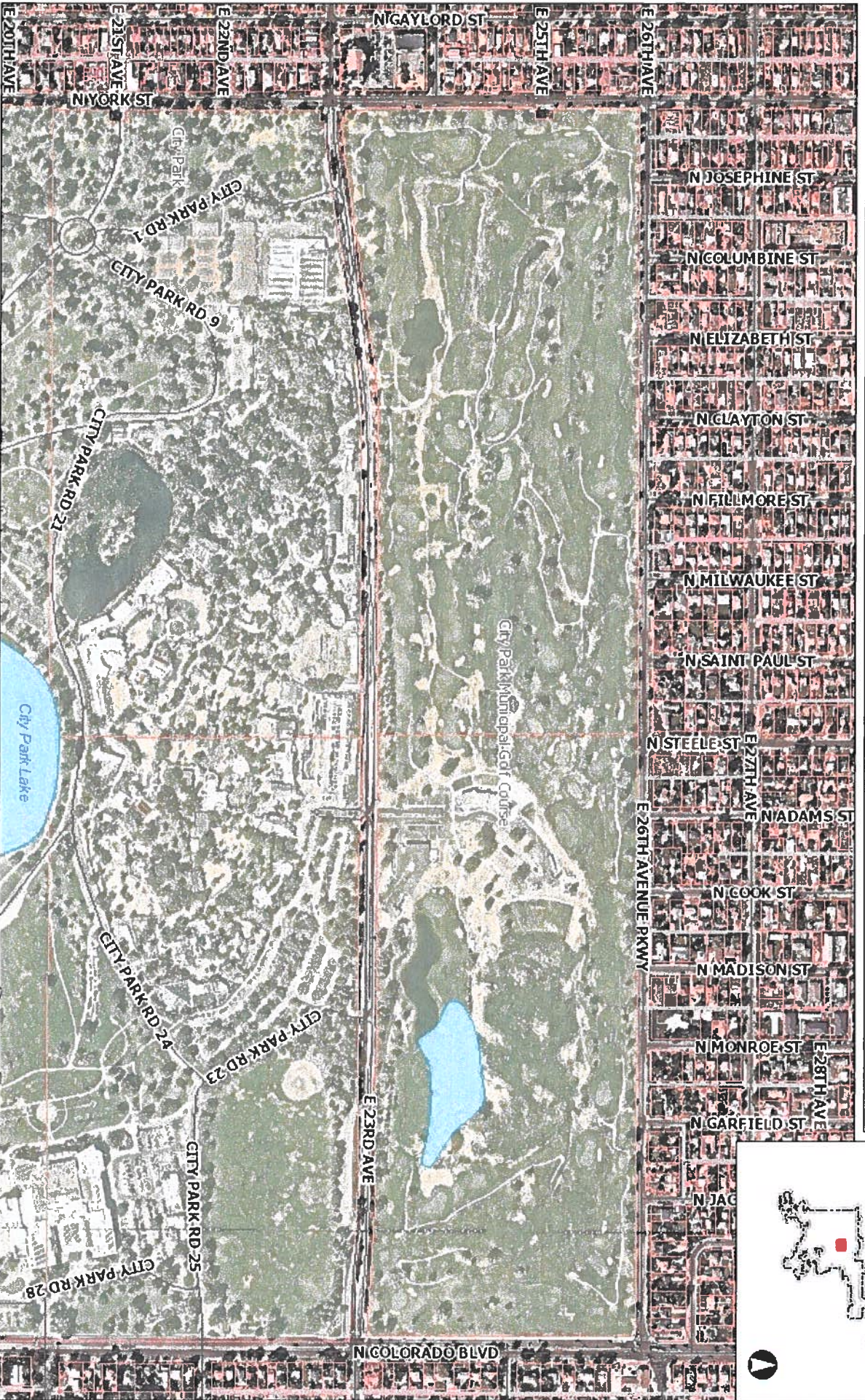




DENVER
THE MILE HIGH CITY

City Park Golf Course



1156 Feet
0 578 1156 Feet
MGS_1984_Web_Mercator_Auxiliary_Sphere
© City and County of Denver 1: 9,028
Map Generated: 2/19/2020

The City and County of Denver shall not be liable for damages of any kind arising out of the use of this information. The information is provided "as is" without warranty of any kind, express or implied, including, but not limited to the fitness for a particular use.

THIS IS NOT A LEGAL DOCUMENT.

Unnamed Stanford & Balsam Park



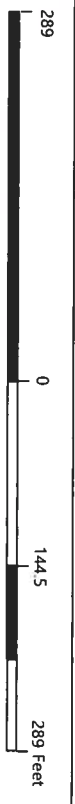
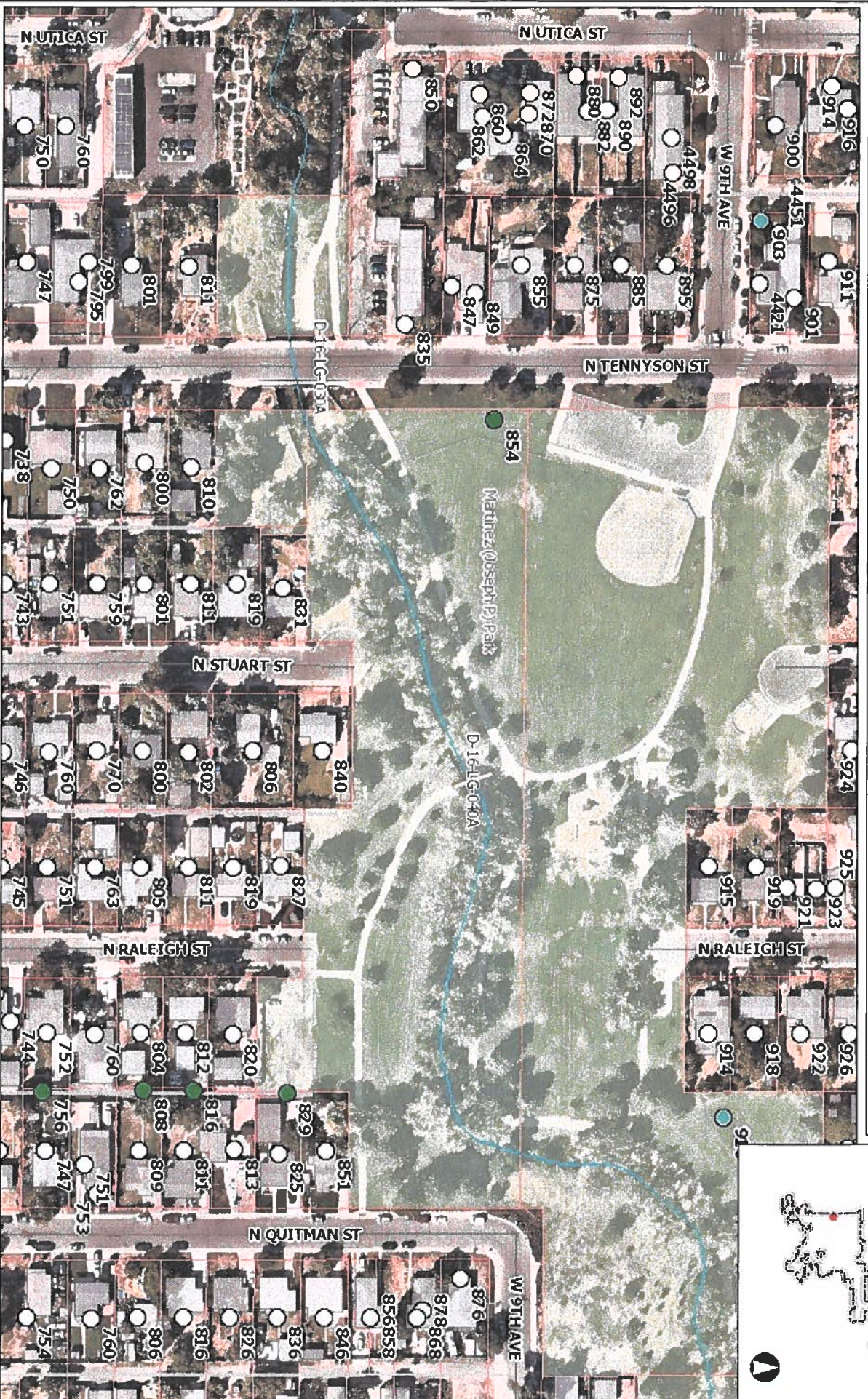
578
0
289
578 Feet
WGS_1984_Web_Mercator_Auxiliary_Sphere
© City and County of Denver

1: 4,514
0.1
Map Generated: 2/19/2020

The City and County of Denver shall not be liable for damages of any kind arising out of the use of this information. The information is provided "as is" without warranty of any kind, express or implied, including, but not limited to the fitness for a particular use.

THIS IS NOT A LEGAL DOCUMENT.

Martinez Park Addition



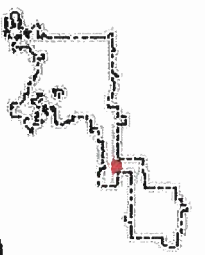
WGS_1984_Web_Mercator_Auxiliary_Sphere
© City and County of Denver
1: 2,257

Map Generated: 2/19/2020

The City and County of Denver shall not be liable for damages of any kind arising out of the use of this information. The information is provided "as is" without warranty of any kind, express or implied, including, but not limited to the fitness for a particular use.

THIS IS NOT A LEGAL DOCUMENT

First Creek Village Park



WGS_1984_Web_Mercator_Auxiliary_Sphere
© City and County of Denver

1: 4,514

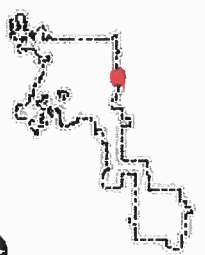
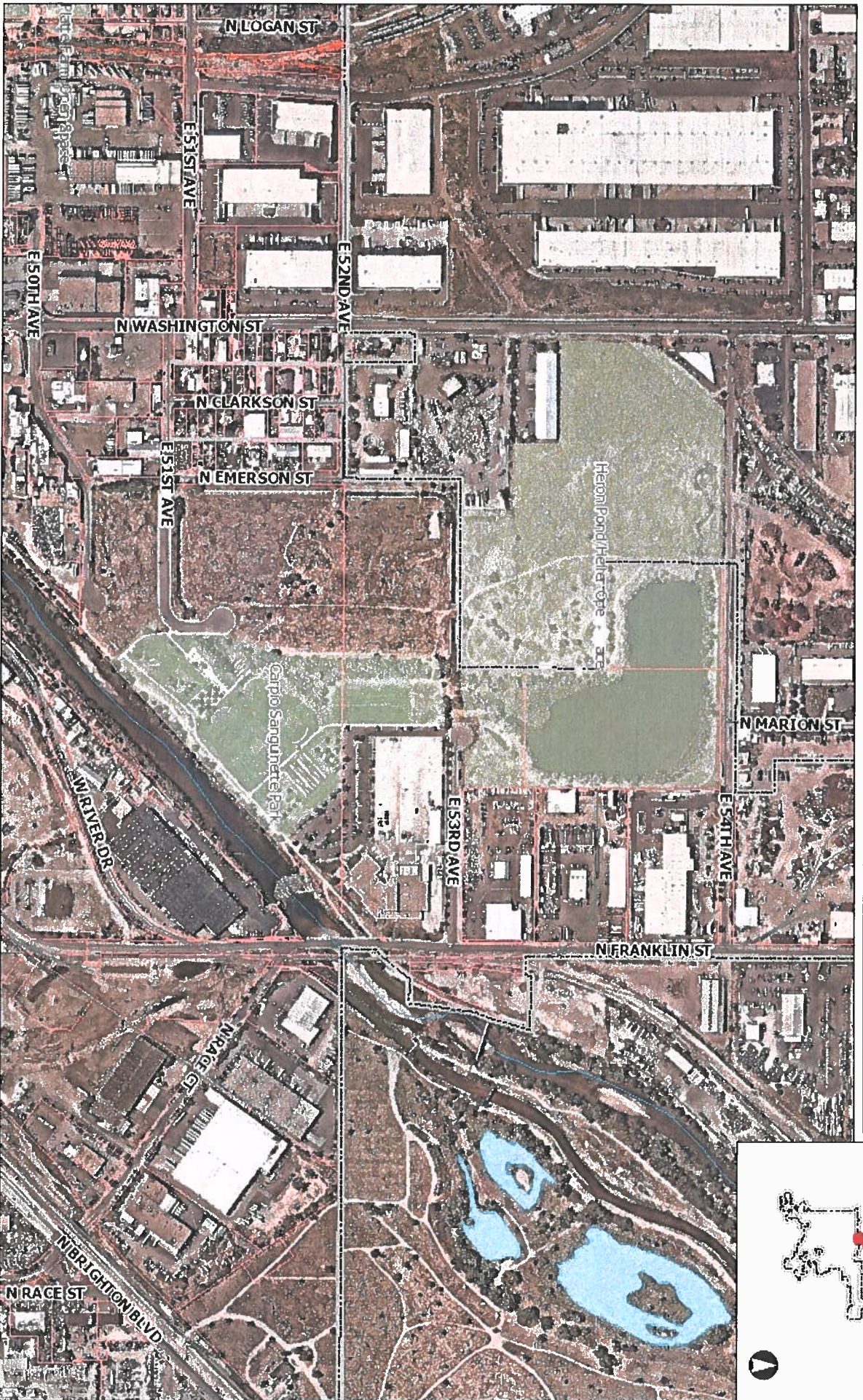
0.1

Map Generated: 2/19/2020

The City and County of Denver shall not be liable for damages of any kind arising out of the use of this information. The information is provided "as is" without warranty of any kind, express or implied, including, but not limited to the fitness for a particular use.

THIS IS NOT A LEGAL DOCUMENT.

Carpio-Sanguinette/ Heron Pond



WGS_1984_Web_Mercator_Auxiliary_Sphere
© City and County of Denver
1:9,028
Map Generated: 2/19/2020

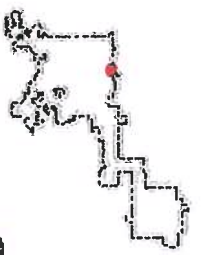
The City and County of Denver shall not be liable for damages of any kind arising out of the use of this information. The information is provided "as is" without warranty of any kind, express or implied, including, but not limited to the fitness for a particular use.

THIS IS NOT A LEGAL DOCUMENT.



DENVER
THE MILE HIGH CITY

Platte Farm Open Space



WGS_1984_Web_Mercator_Auxiliary_Sphere
© City and County of Denver 1:4,514

0.1 Map Generated: 2/19/2020

The City and County of Denver shall not be liable for damages of any kind arising out of the use of this information. The information is provided "as is" without warranty of any kind, express or implied, including, but not limited to the fitness for a particular use.

THIS IS NOT A LEGAL DOCUMENT.

Cherry Creek Open Space



WGS_1984_Web_Mercator_Auxiliary_Sphere
© City and County of Denver 1:4,514 0.1
Map Generated: 2/19/2020

The City and County of Denver shall not be liable for damages of any kind arising out of the use of this information. The information is provided "as is" without warranty of any kind, express or implied, including, but not limited to the fitness for a particular use.

THIS IS NOT A LEGAL DOCUMENT.

Barnum East Park



289 0 144.5 289 Feet

WGS_1984_Web_Mercator_Auxiliary_Sphere
City and County of Denver

1: 2,257

0.1

Map Generated: 2/19/2020

The City and County of Denver shall not be liable for damages of any kind arising out of the use of this information. The information is provided "as is" without warranty of any kind, express or implied, including, but not limited to the fitness for a particular use.

THIS IS NOT A LEGAL DOCUMENT